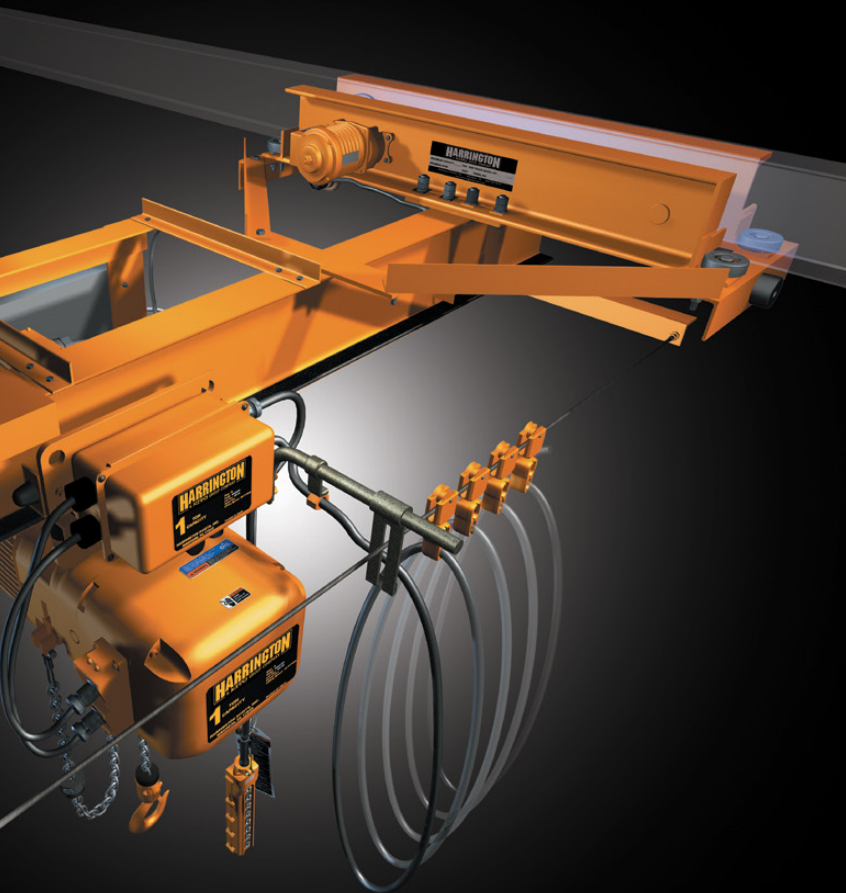


Harrington Crane Kit Package



Components to build with — Just add a beam

Harrington crane kit packages include high-performance components, that when coupled with a bridge beam, easily handle the most demanding CMAA class “C” crane applications. Top running kits are available in 1 through 10 Ton 20' – 60' span and underhung are available in 2 through 5 Ton 20' – 50' span.



Included in Crane Kit Packages

- **End Trucks** – 40 or 80 FPM with 3-step VFD control
- **Hoist and Trolley** – Dual speed or 2-step, VFD controlled
- **Lift** – 20 foot
- **Chain Container** – Canvas
- **Beam Accessory Kit** – Includes all braces, mounting plates, guide wire brackets, end stops, control panel brackets, hardware and instructions
- **Bridge Control Panel** – With UL listed Power Electronics® VFD control panel with plug and play connections for end trucks
- **Crane Wiring** – Complete package
- **Flat Cable Festooning** – Complete package for power and roving pendant
- **Pendant** – 8-button with on/off
- **Voltage** – 460-3-60

Trolley Hoist Models

- 1 Ton: NERM010LD-SD
- 2 Ton: NERM020LD-SD
- 3 Ton: NERM030CD-SD
- 5 Ton: NERM050LD-SD
- 10 Ton: NERM100LD-L
(trolley is single speed)

Ask your local sales representative or call our Customer Service staff for friendly and expert advice on models and options.

TROLLEY HOIST



- H4 rated hoist, 60 minute duty rating for the most demanding applications
- “The Guardian” Smart Brake Technology revolutionary DC current motor brake with electrical failsafe design and 10 year warranty
- Adjustable dual speed via Under-the-cover variable frequency control
- Completely sealed body suitable for harsh indoor or outdoor environments – IP55 rated (Consult owner’s manual for details)
- High-strength, nickel-plated load chain is corrosion and wear resistant
- 5 pocket load sheave improves chain life and promotes smooth lifting

END TRUCKS

Top Running

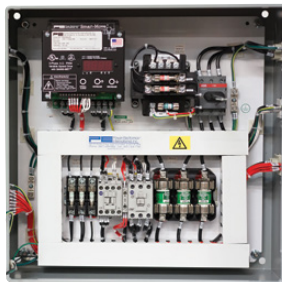


Underhung



- Totally enclosed non-ventilated (TENV) motors with adjustable DC brakes
- Helical gear reducers
- Externally adjustable DC brakes allow controlled deceleration
- Thermal motor protection
- Rubber bumpers
- Rail sweeps
- Machined steel wheels with side guide rollers that reduce wheel friction

BRIDGE CONTROL PANEL



- Field adjustable UL listed Power Electronics® variable frequency drive on bridge motors
- Completely pre-wired and tested
- Through-the-door fused disconnect switch
- Control transformer with primary and secondary fusing
- Mainline contactor
- Thermal overload relay

FLAT CABLE FESTOONING



- Flat cable power festoon for smooth trolley travel
- Flat cable roving pendant provides safe and effective handling without close proximity to the load
- Completely pre-wired and tested
- Modular design for easy packaging and installation

RECOMMENDED BRIDGE BEAM SIZES

Maximum Allowable Span (ft)	Capacity (Tons)				
	1	2	3	5	10
20	S10 x 25.4	S12 x 31.8	S15 x 42.9	S15 x 42.9 C8 x 11.5	W18 x 119
25	S10 x 25.4	S12 x 31.8 C8 x 11.5	S15 x 42.9 C8 x 11.5	S15 x 42.9 C10 x 15.3	W24 x 103 C12 x 20.7
30	S12 x 31.8	S15 x 42.9	S15 x 42.9 C10 x 15.3	W16 x 77	W27 x 129
35	S15 x 42.9	S15 x 42.9 C8 x 11.5	W16 x 67	W21 x 83	W30 x 148
40	S15 x 42.9 C8 x 11.5	W18 x 60	W18 x 71	W21 x 83	W27 x 129 C15 x 33.9
45	W16 x 57	W18 x 71	W18 x 76	W24 x 94	W30 x 148 C15 x 33.9
50	W18 x 60	W18 x 76	W21 x 83	W27 x 102	W30 x 148 C15 x 33.9
55	W16 x 67	W21 x 83	W24 x 94	W27 x 114	W30 x 148 C15 x 33.9
60	W18 x 76	W21 x 93	W27 x 114	W30 x 116 C15 x 33.9	W33 x 169 C15 x 33.9

Standard trolley beam flange ranges are: 1 Ton = 2.28" - 5.00"; 2 & 3 Ton = 3.23" - 6.02"; 5 Ton = 3.94" - 7.01"; 10 Ton = 5.50" - 8.66"
For larger beam sizes, additional trolley shaft extension kits are required.

Harrington Hoists, Inc.
401 West End Avenue
Manheim, PA 17545



Specifications and dimensions are subject to change without notice.