



HBTF

Bar Tong Fixed Page 62



HBTA

Bar Tong Adjustable..... Page 63

Distributed by Tri-State Equipment Company Inc.

Email: sales@tsoverheadcrane.com

Web: www.tsoverheadcrane.com

PH: 314-869-7200 | FAX: 314-869-7226



HBTF BAR TONG FIXED

FEATURES

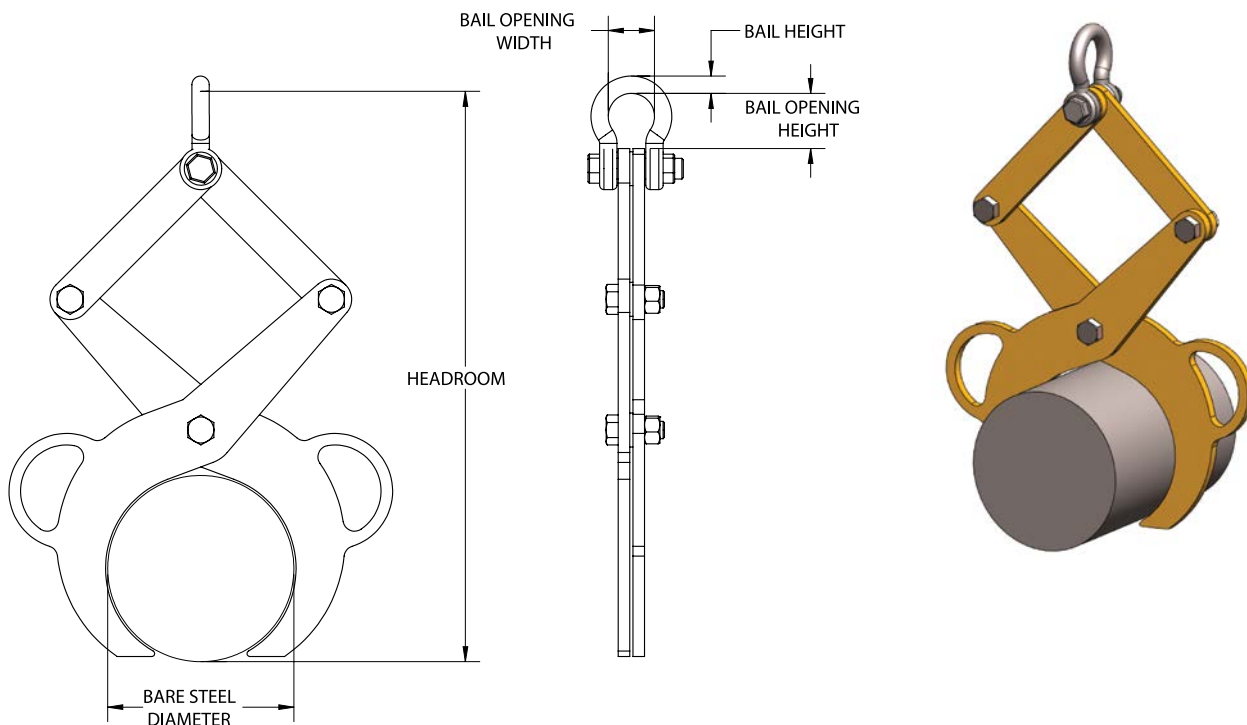
- This style of fixed diameter tong is ideal for lifting round bars, cast or steel pipe.
- The load must be balanced during the lift.
- Can be used in pairs attached to a lifting/spreader beam to handle longer loads.
- Engineered and manufactured to ASME B30.20 & BTH-1 Design Category B Service Class 2.
- 100% of ALL tongs are Proof-Tested to 125% capacity and certificates supplied at No Additional Charge.
- Made in USA.

OPTIONS

- Higher capacities available



TONGS



Model #	Capacity (US Tons)*	Dimensions (Inches)					Weight (Lbs.)
		Bare Steel Diameter	Headroom	Bail Height	Bail Opening Width	Bail Opening Height	
HBTF-1/2-5	1/2	5	17.00	0.63	1.69	1.69	17
HBTF-1-8	1	8	25.00	0.75	2	2	25

*1 US Ton = 2,000 lbs.



HBTA

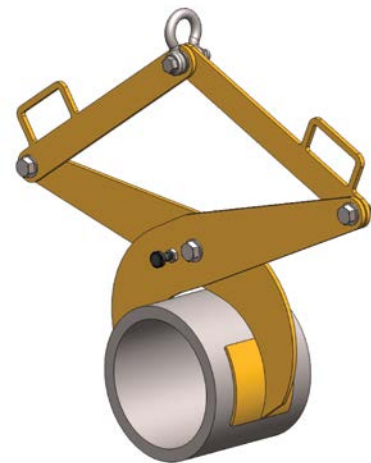
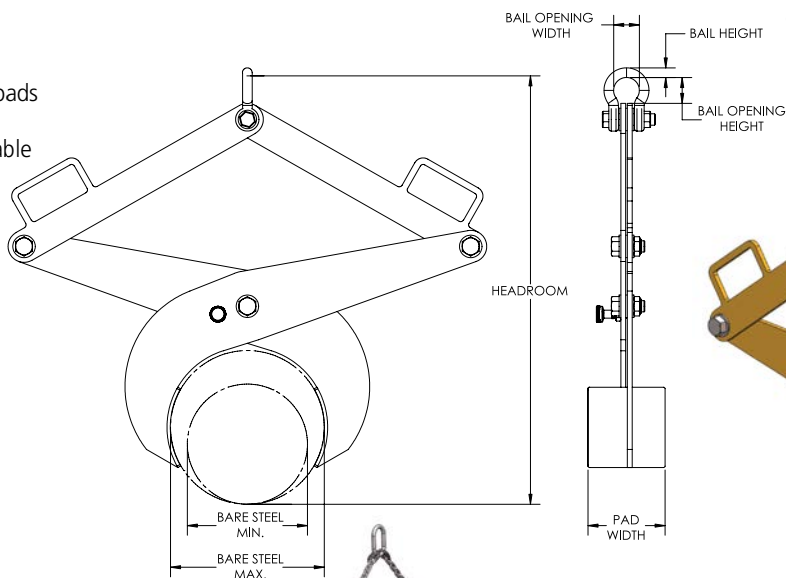
BAR TONG ADJUSTABLE

FEATURES

- This style of adjustable diameter tong is ideal for lifting round bars, cast or steel pipe of various diameters.
- Hold open latch supplied on all 1 ton standard tongs.
- Can be supplied with optional replaceable urethane pads for additional load protection.
- The load must be balanced during the lift.
- Can be used in pairs attached to a lifting/spreader beam to handle longer loads.
- Engineered and manufactured to ASME B30.20 & BTH-1 Design Category B Service Class 2.
- 100% of ALL tongs are Proof-Tested to 125% capacity and certificates supplied at No Additional Charge.
- Made in USA.

OPTIONS

- Replaceable urethane pads
- Hold open latch
- Higher capacities available



Model #	Capacity (US Tons)*	Dimensions (Inches)										Weight (Lbs.)
		Bare Steel Range Min	Bare Steel Range Max	Urethane Pad Range Min	Urethane Pad Range Max	Head-room Min	Head-room Max	Pad Width	Bail Height	Bail Opening Width	Bail Opening Height	
HBTA-1/2-2.5/4	1/2	2.5	4	1.75	3.25	15	13	2.25	0.63	1.69	1.69	10
HBTA-1-4/7	1	4	7	3.25	6.25	24	21	5	0.63	1.69	1.69	25
HBTA-1-7/12	1	7	12	6.25	11.25	38	34	6	0.75	2	2	55
HBTA-1-10/15	1	10	15	9.25	14.25	46	41	6	0.75	2	2	115
HBTA-1-15/20	1	15	20	14.25	19.25	65	60	8	0.97	2.28	2.28	225

*1 US Ton = 2,000 lbs.



DO NOT EXCEED CAPACITY!
See the SAFETY GUIDELINES section before using these products. Pages 92–95.

LOAD INFORMATION:

Describe the material you are planning to lift: _____

Tong Type Needed:

Friction (Designed to lift tubes, rolls, round bars, pipe, & other cylindrical materials)

Friction Tong Load Dimensions:

Min (inches) O.D. _____ I.D. _____ Length _____ Weight _____

Max (inches) O.D. _____ I.D. _____ Length _____ Weight _____

Desired Tong Lift Point: O.D. I.D. Ends

Supporting (Designed to lift crates, boxes, containers, & other square/rectangular shaped materials)

Indentation (Designed to lift ingots, boxes, bales, and other straight sided materials)

Supporting/Indentation Tong Load Dimensions:

Min (inches) Width _____ Length _____ Height _____ Weight _____

Max (inches) Width _____ Length _____ Height _____ Weight _____

Desired Tong Lift Point: Width Side Length Side

Product Positioning Prior Lift: Flat Surface Rack Other (specify): _____

Product Positioning Post Lift: Flat Surface Rack Other (specify): _____

Does Lifter Require Protective Lining To Prevent Damage To The Load: Yes No

Is A Latch Required (Used to assist with hands-free operation): Yes No

Is An Auto-Latch Required (Used to assist with hands-free operation): Yes No

Is The Load Hot: Yes No

If Yes: Max Temp: _____ Required Lifter/Load Contact Time : _____ Min Time Between Lifts _____

CRANE SPECIFICATIONS:

Distance Between Top Of The Load To The Crane Hook High Position: _____

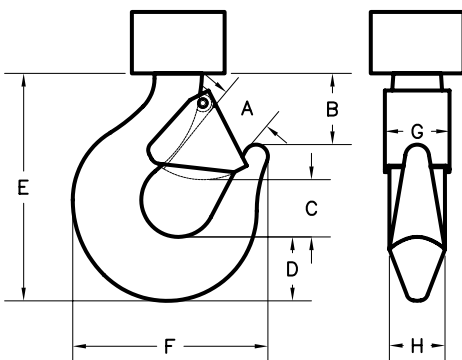
Capacity Of The Crane: _____

Required Duty Cycle Of The Roll Lifter: Lifts Per Hour _____ Lifts Per Day _____

Crane Classification(s): A B C D E F

CRANE HOOK SPECIFICATIONS (Inches) :

A: _____ B: _____ C: _____ D: _____ E: _____ F: _____ G: _____ H: _____



Please provide pertinent application information not supplied above (extreme product or operating temperature, extreme environmental conditions such as temperature or moisture, space or headroom restrictions, additional specifications):
