

P.O. Box 519  
Corona, California 92878-0519

1351 W. Second Street  
Oconomowoc, Wisconsin 53066

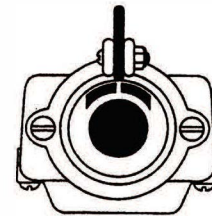
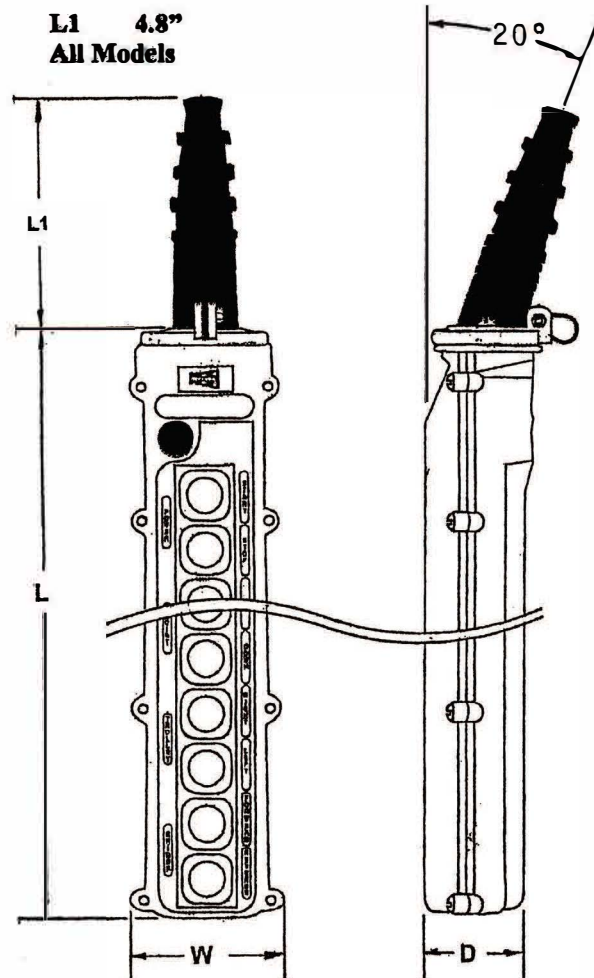
379 Davis Road, Unit #3  
Oakville, Ontario, Canada L6J 2X2

## L SERIES PENDANT STATIONS ASSEMBLY INFORMATION

Refer to Pushbutton Wiring Diagrams  
LS-00W and PPS-99W for Switch  
Contact and Wiring Information.

### CAUTION

MAKE CERTAIN POWER SUPPLY IS DISCONNECTED BEFORE INSTALLING, REPAIRING, OR WORKING IN THE PROXIMITY OF ANY ELECTRICAL SYSTEM. ONLY QUALIFIED ELECTRICAL PERSONNEL SHOULD INSTALL OR REPAIR THESE PRODUCTS.



### ENCLOSURE OPENING

All 4 models of the L station have the same size enclosure opening. Two clamps sized for different cables are included for internal strain relief.

Catalog Number	Enclosure Type	W Width	D Depth	L Length	Weight Lbs.	Cable Range
L4-S	4 Button Shallow	3.13"	2"	8.25"	.64	.640"-.745"
L6-S	6 Button Shallow			10.5"	.74	.640"-.840"
L8-S	8 Button Shallow			12.88"	.88	.745"-.890"
L10-S	10 Button Shallow			15.25"	.96	.840"-.890"
L4-D	4 Button Deep	3.13"	2.63"	8.25"	.78	.640"-.745"
L6-D	6 Button Deep			10.5"	.88	.640"-.840"
L8-D	8 Button Deep			12.88"	.92	.745"-.890"
L10-D	10 Button Deep			15.25"	1.04	.840"-.890"

Multi-step cord grip will adapt to 8 conductor to 24 conductor round cables by cutting to the steps illustrated on the back page. Each enclosure comes with the multi-step cord grip, internal cable clamp, strain relief hook, plain black boots, and legend plate sheet.

Distributed by Tri-State Equipment Company Inc.  
sales@tsoverheadcrane.com  
www.tsoverheadcrane.com  
Tel: (314) 869-7200

## Legend Plate Set L-LPS

(A set provided with each enclosure)

UP	HOIST	START	LIGHTS
DOWN	AUX HOIST	STOP	HORN
RAISE	TROLLEY	ON-OFF	SLOW
LOWER	BRIDGE	PUSH-ON-OFF	FAST
NORTH	MAGNET	E-STOP	INCHING
SOUTH	INTERLOCK	POWER	A-B
EAST	FRONT	LIFT	A-BOTH-B
WEST	REAR	DROP	A-AB-B
FORWARD	OPEN	IN	ENGAGE
REVERSE	CLOSE	OUT	DISENGAGE
RIGHT	LEFT		

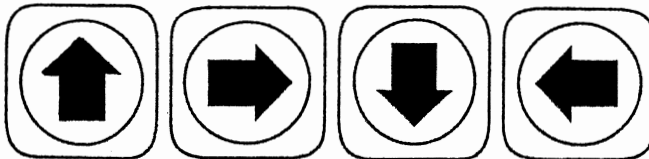
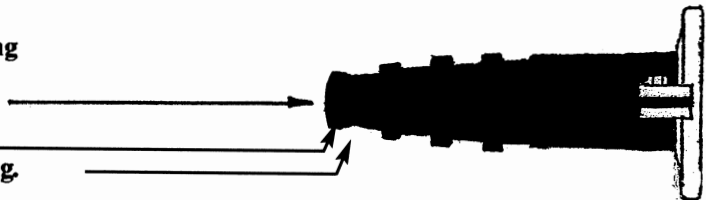
### MULTI-STEP CORD GRIP

#### Cutting Directions for Cable Size Opening

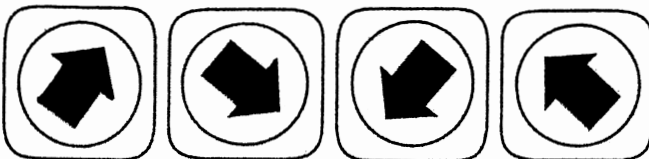
RPC-816 fits in the end opening. No cut.

RPC-1216 fits in the first landing.

RPC-1616 & 2416 fit in the second landing.



Straight-Arrow Boot #L-B90 shown rotated in 90° increments to achieve an up, down, left or right direction.



Angle-Arrow Boot #L-B45 shown rotated in 90° increments to achieve forward and reverse directions.

Plain black boots are standard on the 'L' station enclosures. Arrow boots are available at no added cost but must be specified at the time of order. Red and green boots are supplied with either the LS-A or LS-M start-stop switches.



Distributed by Tri-State Equipment Company Inc.  
sales@tsoverheadcrane.com  
www.tsoverheadcrane.com  
Tel: (314) 869-7200

345 Adams Circle  
Corona, CA 92882

1351 W. Second Street  
Oconomowoc, WI 53066

1445 Norjohn Ct. Unit 10  
Burlington, Ontario, Canada L7L 0E6

# PUSH BUTTON INSERTS L SERIES

## SCHEMATIC & OPERATIONAL DIAGRAMS

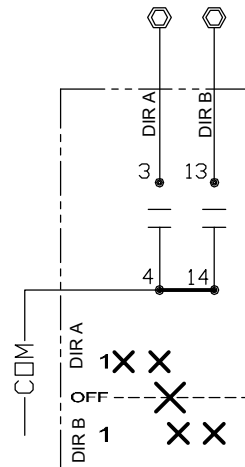
(MULTI-SPEED INSERTS ARE ALL PROGRESSIVE STEP UNLESS SPECIFIED)

### ⚠ WARNING

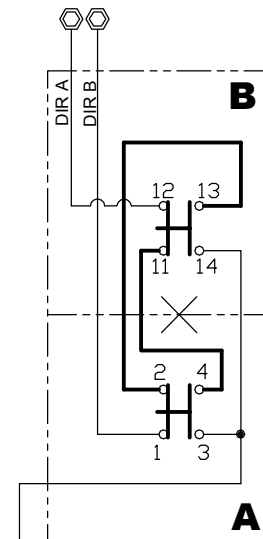
MAKE CERTAIN POWER SUPPLY IS DISCONNECTED BEFORE INSTALLING, REPAIRING, OR WORKING IN THE PROXIMITY OF ANY ELECTRICAL SYSTEM. ONLY QUALIFIED ELECTRICAL PERSONNEL SHOULD INSTALL OR REPAIR THESE PRODUCTS.

**NOT DESIGNED FOR  
DC CIRCUITS**

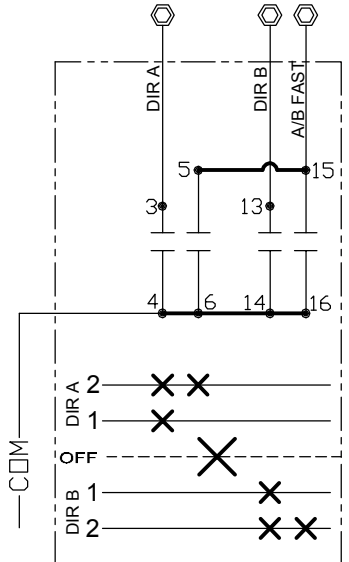
Duct-O-Wire Company reserves the right to alter or amend technical specifications at any time without notice.



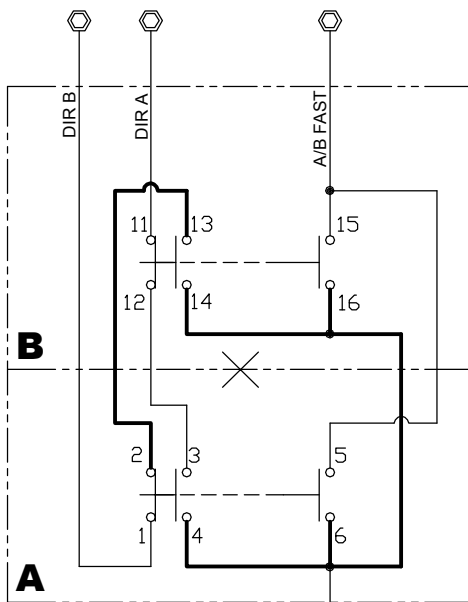
**SP-1  
1 - SPEED INSERT  
2 N.O. CONTACTS**



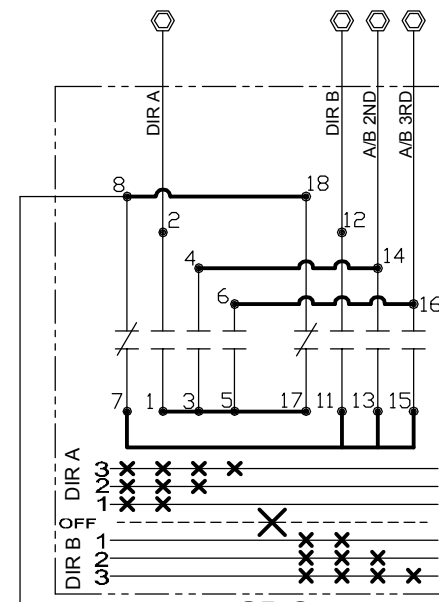
**SP-1-S  
1 - SPD INSERT  
INTERLOCKED  
2 N.O. CONTACTS  
2 N.C. CONTACTS**



**SP-2  
2 - SPEED INSERT  
4 N.O. CONTACTS**



**SP-2-S  
INTERLOCKED  
4 N.O. CONTACTS  
2 N.C. CONTACTS**



**SP-3  
3 - SPEED INSERT  
6 N.O. CONTACTS  
2 N.C. CONTACTS**

**PUSH-BUTTON INSERT RATING: 125 VAC, ONE AMP CONTINUOUS PER CONTACT**

# PUSH BUTTON INSERTS L SERIES

## SCHEMATIC & OPERATIONAL DIAGRAMS

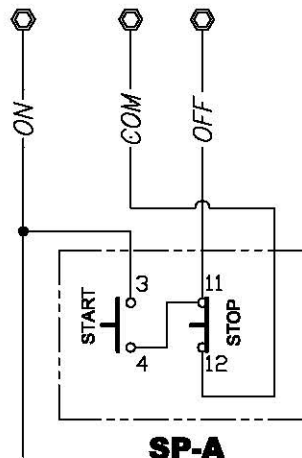
### ⚠ WARNING

MAKE CERTAIN POWER SUPPLY IS DISCONNECTED BEFORE INSTALLING, REPAIRING, OR WORKING IN THE PROXIMITY OF ANY ELECTRICAL SYSTEM. ONLY QUALIFIED ELECTRICAL PERSONNEL SHOULD INSTALL OR REPAIR THESE PRODUCTS.

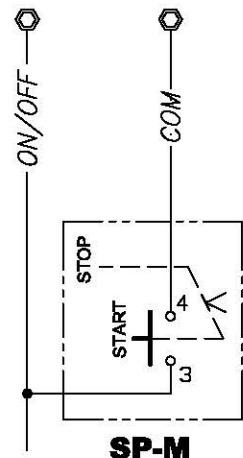
**NOT DESIGNED FOR  
DC CIRCUITS**

Duct-O-Wire Company reserves the right to alter or amend technical specifications at any time without notice.

### START/STOP INSERTS

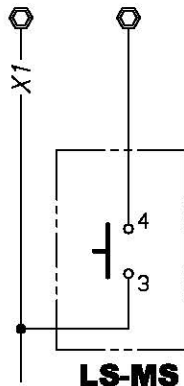


**SP-A  
MOMENTARY**

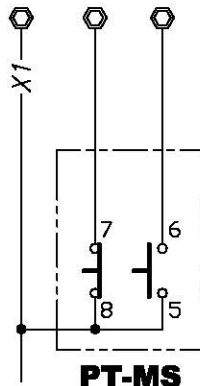


**SP-M  
1 N.O. CONTACT  
MAINTAINED**

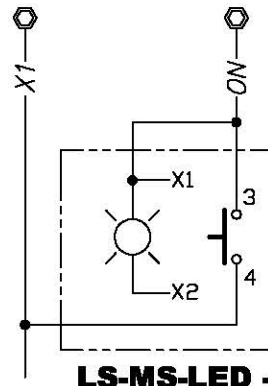
### MOMENTARY SWITCHES



**LS-MS**

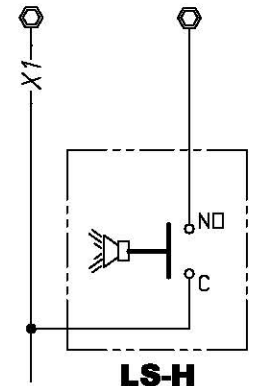


**PT-MS**



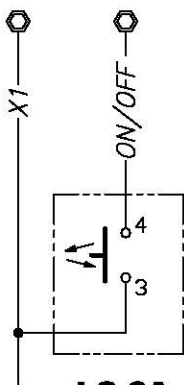
**LS-MS-LED - x  
ILLUMINATED**

"x" = SPECIFY COLOR

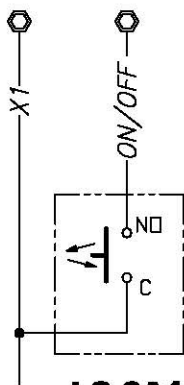


**LS-H  
HORN BUTTON**

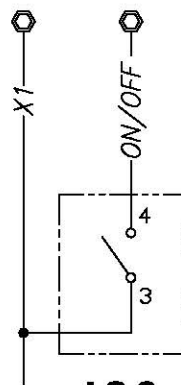
### MAINTAINED SWITCHES



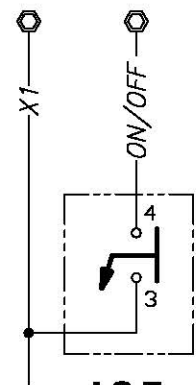
**LS-6A  
PUSH ON/OFF**



**LS-6A1  
MINI PUSH ON/OFF**



**LS-6  
TOGGLE**



**LS-7  
KEY SWITCH**

**PUSH-BUTTON INSERT RATING: 125 VAC, ONE AMP CONTINUOUS PER CONTACT**

# PUSH BUTTON INSERTS L SERIES

## SCHEMATIC & OPERATIONAL DIAGRAMS

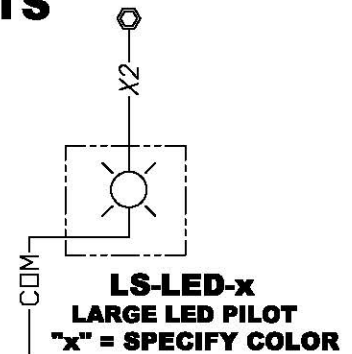
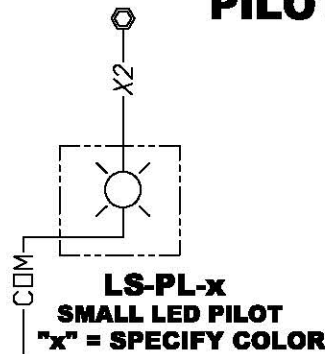
### ⚠ WARNING

MAKE CERTAIN POWER SUPPLY IS DISCONNECTED BEFORE INSTALLING, REPAIRING, OR WORKING IN THE PROXIMITY OF ANY ELECTRICAL SYSTEM. ONLY QUALIFIED ELECTRICAL PERSONNEL SHOULD INSTALL OR REPAIR THESE PRODUCTS.

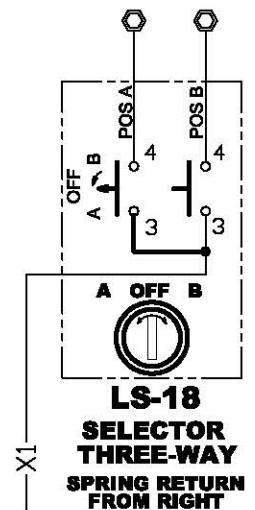
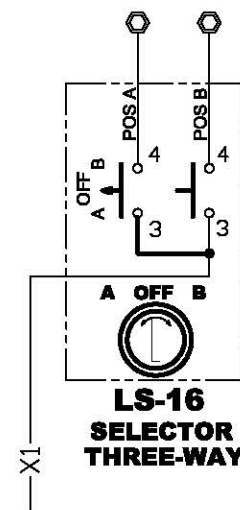
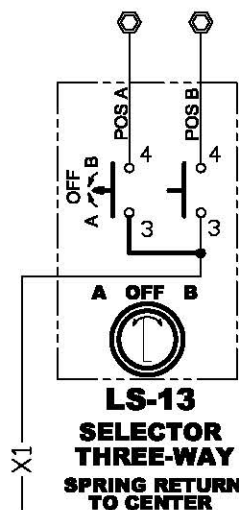
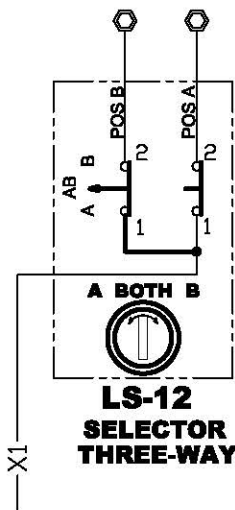
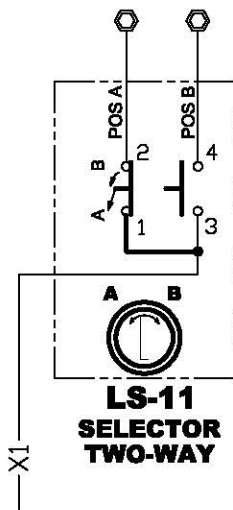
**NOT DESIGNED FOR  
DC CIRCUITS**

Duct-O-Wire Company reserves the right to alter or amend technical specifications at any time without notice.

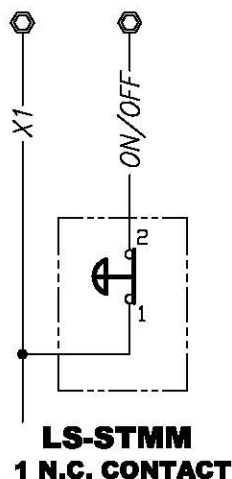
### PILOT LIGHTS



### SELECTOR SWITCHES

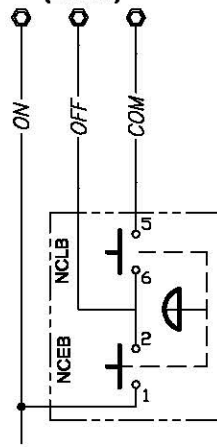


### E-STOP

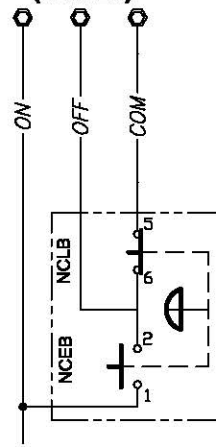


### 3 POSITION E-STOP

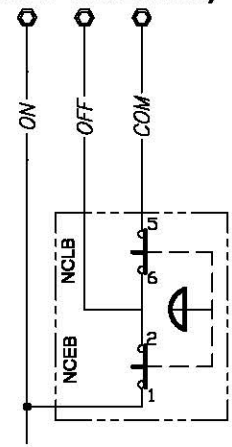
**POSITION 1 = OFF (DOWN)**



**POSITION 2 = RUN (CENTER)**



**POSITION 3 = START (PULL - MOMENTARY)**



**PUSH-BUTTON INSERT RATING: 125 VAC, ONE AMP CONTINUOUS PER CONTACT**

# PUSH BUTTON INSERTS

## L SERIES

### INSTALLATION DIAGRAM

