

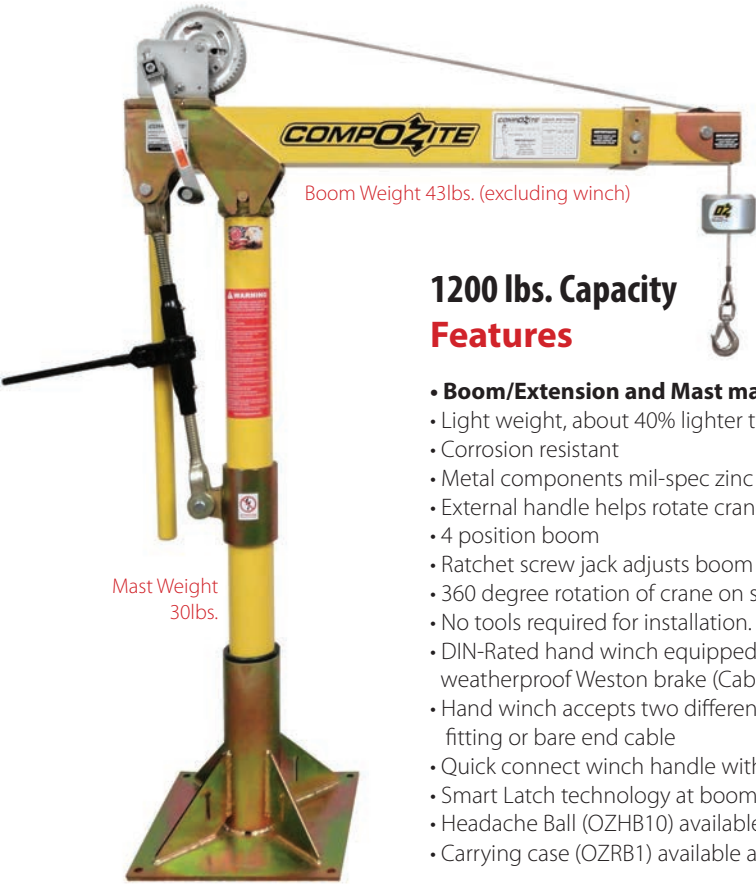
COMPOZITE® DAVIT CRANE

Individually tested and certified at 125%



OZ1200DAV (PATENTED)

Options for faster lowering and raising



Boom Weight 43lbs. (excluding winch)

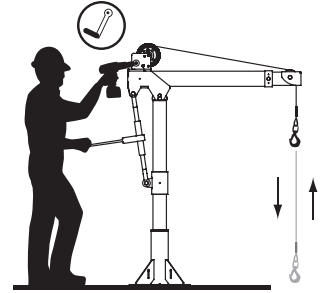
Mast Weight 30lbs.

1200 lbs. Capacity Features

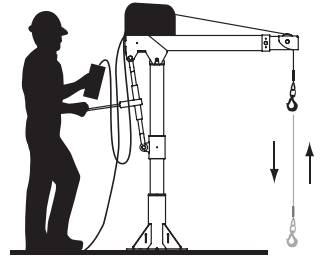
- **Boom/Extension and Mast made of Advanced Composite Material**
- Light weight, about 40% lighter than steel
- Corrosion resistant
- Metal components mil-spec zinc plated
- External handle helps rotate crane under load
- 4 position boom
- Ratchet screw jack adjusts boom under load giving you infinite range of lift
- 360 degree rotation of crane on sleeve bearing
- No tools required for installation. One person setup.
- DIN-Rated hand winch equipped standard with a load holding weatherproof Weston brake (Cable assembly sold separately)
- Hand winch accepts two different cable termination points: swaged ball fitting or bare end cable
- Quick connect winch handle with power drill adapter included
- Smart Latch technology at boom/mast connection
- Headache Ball (OZHB10) available and sold separately. See page 34
- Carrying case (OZRB1) available and sold separately

Crane weighs only 83 lbs. As Shown

One person set up. No tools required for installation. Lightweight & Portable.



Detach winch handle for drill option



AC and DC power winches available See page 25

Weight

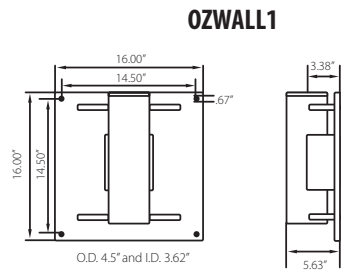
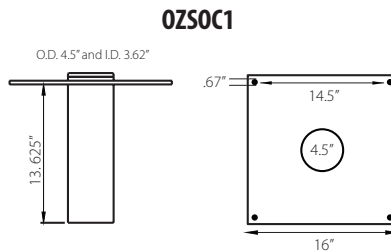
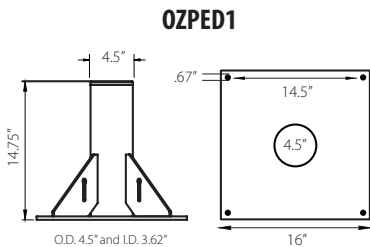
Weight (excluding winch)	Boom	Mast	Net
OZ1200DAV (lbs)	43	30	73

OZ1200DAV shown with optional OZPED1 Pedestal base, OZSS.25-55B wire rope assembly, and OZHB10 headache ball
Bases, cable assemblies and headache ball sold separately

WIRE/SYNTHETIC ROPE ASSEMBLIES
(sold separately) Custom length available.
See wire/synthetic rope assembly options on page 3

Manual winch: 3/16" - 80 ft max. lift length • 1/4" - 55ft max. lift length
AC/DC Electric Winch: 3/16" - 90 ft max. lift length • 1/4" - 45ft max. lift length

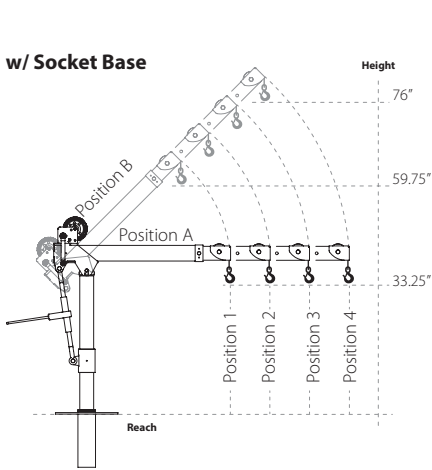
OZ1200DAV BASES (sold separately) Comes with mounting template.



Dimensions and illustrations are for reference only and subject to change without notice.



OZ1200DAV DIMENSIONS Dimensions are for reference only and subject to change without notice.

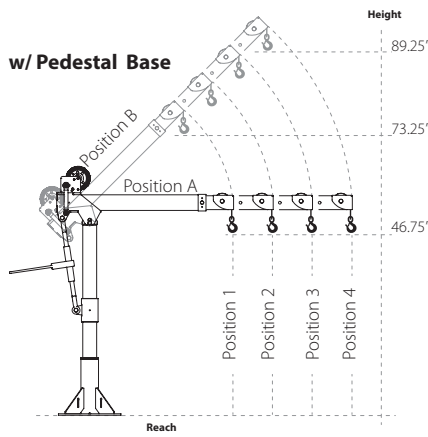


Boom Horizontal Position (A)

- Boom Position 1: Reach 36"
- Boom Position 2: Reach 46"
- Boom Position 3: Reach 56"
- Boom Position 4: Reach 66"

Boom 45° Position (B)

- Boom Position 1: Reach 22"
- Boom Position 2: Reach 29"
- Boom Position 3: Reach 36"
- Boom Position 4: Reach 43"

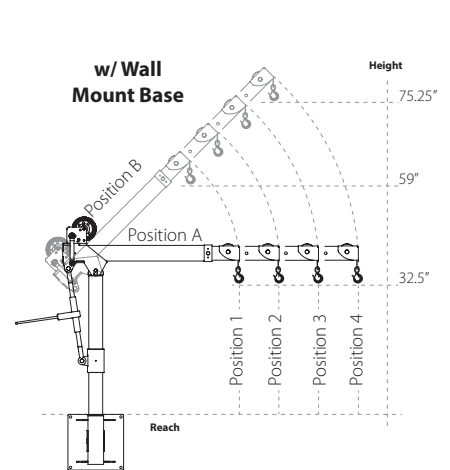


Boom Horizontal Position (A)

- Boom Position 1: Reach 36"
- Boom Position 2: Reach 46"
- Boom Position 3: Reach 56"
- Boom Position 4: Reach 66"

Boom 45° Position (B)

- Boom Position 1: Reach 22"
- Boom Position 2: Reach 29"
- Boom Position 3: Reach 36"
- Boom Position 4: Reach 43"

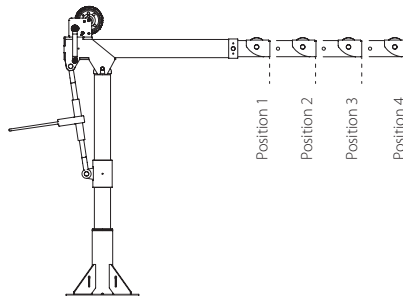


Boom Horizontal Position (A)

- Boom Position 1: Reach 36"
- Boom Position 2: Reach 46"
- Boom Position 3: Reach 56"
- Boom Position 4: Reach 66"

Boom 45° Position (B)

- Boom Position 1: Reach 22"
- Boom Position 2: Reach 29"
- Boom Position 3: Reach 36"
- Boom Position 4: Reach 43"



Load Ratings OZ1200DAV

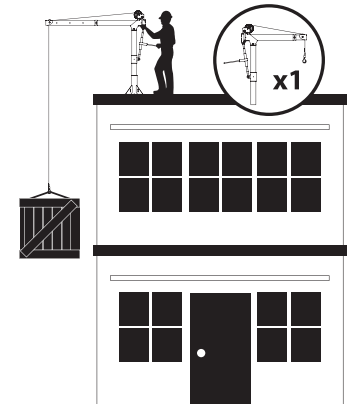
*Table based on 1/4 inch wire rope or 3/16" Upretex Synthetic Rope

Load Ratings	1st. Layer	Mid. Drum	Full Drum
Position 1 (lbs)	1200	875	550
Position 2 (lbs)	900	875	550
Position 3 (lbs)	700	700	550
Position 4 (lbs)	400	400	400

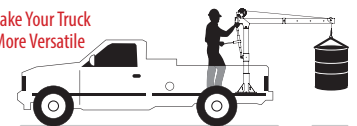
*Table based on 3/16" wire rope

Load Ratings	1st. Layer	Mid. Drum	Full Drum
Position 1 (lbs)	800	800	550
Position 2 (lbs)	800	800	550
Position 3 (lbs)	700	700	550
Position 4 (lbs)	400	400	400

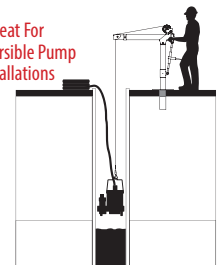
Designed for use in multiple workstations. Buy one crane and multiple bases.



Make Your Truck More Versatile



Great For Submersible Pump Installations



WIRE/SYNTHETIC ROPE ASSEMBLIES

Steel Wire Rope (For manual winch)

OZGAL.19-80B	3/16" x 80'	Galvanized cable assembly
OZSS.19-80B	3/16" x 80'	Stainless steel cable assembly
OZGAL.25-55B	1/4" x 55'	Galvanized cable assembly
OZSS.25-55B	1/4" x 55'	Stainless steel cable assembly

Above cable assemblies come with swaged ball and swivel hook with latch.

Custom cable length available.

3/16" - 80 ft max. length • 1/4" - 55ft max. length

Steel Wire Rope (For manual and power winch)

OZGAL.19-90	3/16" x 90'	Galvanized cable assembly
OZSS.19-90	3/16" x 90'	Stainless Steel cable assembly
OZGAL.25-45	1/4" x 45'	Galvanized cable assembly
OZSS.25-45	1/4" x 45'	Stainless Steel cable assembly

All cable assemblies come with a swivel hook with latch.

Custom cable length available.

3/16" - 90 ft max. length • 1/4" - 45ft max. length

Synthetic Rope

OZSR.19-15	3/16" x 15'	Ultrax Synthetic Rope
OZSR.19-50	3/16" x 50'	Ultrax Synthetic Rope
OZSR.19-90	3/16" x 90'	Ultrax Synthetic Rope
OZSR.25-50	1/4" x 50'	Ultrax Synthetic Rope
OZSR.25-75	1/4" x 75'	Ultrax Synthetic Rope
OZSR.31-55	5/16" x 55'	Ultrax Synthetic Rope
OZSR.38-45	3/8" x 45'	Ultrax Synthetic Rope

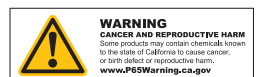
All synthetic rope assemblies come with looped ends and pre-installed swivel hook with latch



HEADACHE BALL

OZHB10

Keeps your wire rope tensioned even when lowering the hook with no load. Compatible with 3/16" and 1/4" wire rope assemblies. Headache balls sold separately from all davit cranes and wire rope assemblies.





DAVIT CRANE COVER

OZDAV-C1

Protect your davit crane from the elements with this waterproof cover. Compatible with all OZ Lifting Products davit cranes 1200 lbs. capacity or less excluding the XR series.



COMING SOON



*Optional floor anchoring system

PORTABLE DAVIT BASE

For all OZ Lifting davit cranes up to 1200 lbs capacity

- Optional floor anchoring system allows the davit to rotate while under load (when base is not anchored the davit must remain in a forward position when lifting)
- Oversized casters make rolling the base and moving loads easy
- Compatible with all OZ lifting davit cranes up to 1200 lbs capacity
- Durable steel construction with powder coat finish
- Davit crane sold separately
- Patent pending



CARBON STEEL & STAINLESS STEEL BRAKE WINCHES

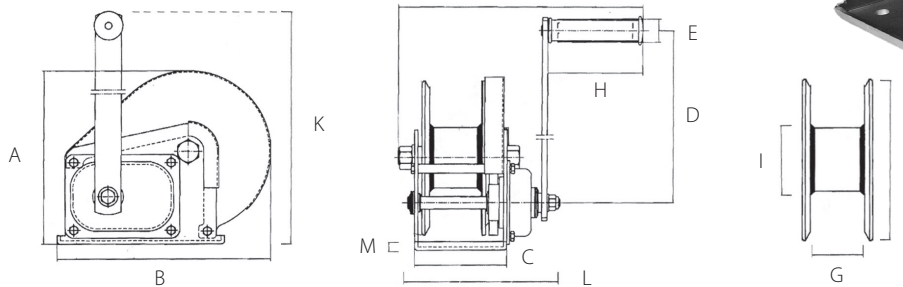
Features

- Compact design
- Ergonomic rubber handle
- Multiple frame mounting positions
- Solid machined gear
- Dual cable anchor point
- Drill drive adapter standard on stainless steel. Optional on carbon steel
- Automatic weatherproof weston style load brake
- High gear ratio
- Test certificate & serial number
- For lifting or pulling/tensioning
- Left hand version of stainless steel winch available (OZ1000BWSS-LH)

Standard - CE

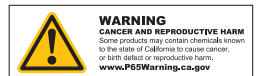
Cable/Drum Capacity	1st layer (ft)	Mid drum (ft)	Full drum (ft)
OZ1000BW – OZ1000BWSS using 1/8" wire rope	7	74	140
OZ1000BW – OZ1000BWSS using 3/16" wire rope	5	34	75
OZ1500BW – OZ1500BWSS using 3/16" wire rope	7	66	140
OZ1500BW – OZ1500BWSS using 1/4" wire rope	5	27	89
OZ2000BW – OZ2000BWSS using 1/4" wire rope	8	36	85
OZ2000BW – OZ2000BWSS using 5/16" wire rope	7	22	52

Load Capacity (lbs - based on the amount of wire rope)			
OZ1000BW – OZ1000BWSS	1000	750	500
OZ1500BW – OZ1500BWSS	1500	1250	750
OZ2000BW – OZ2000BWSS	2000	1500	1000



	OZ1000BW	OZ1000BWSS	OZ1500BW – OZ1500BWSS	OZ2000BW – OZ2000BWSS	
Capacity (lbs)	1000	1000	1500	2000	
Gear Ratio	4.2:1	4.2:1	5:1	10:1	
Dimensions (in)	A	6.22	7.73	8.35	
	B	7.20	7.20	9.36	11.10
	C	3.46	3.46	4.21	5.00
	D	8.26	8.26	12.68	12.99
	E	1.06	1.06	1.06	1.06
	F	10.43	10.43	10.63	11.81
	G	1.98	1.98	2.30	2.52
	H	4.29	4.29	4.29	4.29
	I	1.59	1.98	2.38	3.00
	J	5.33	5.33	7.00	7.09
	K	10.20	10.20	15.31	15.35
L	5.98	5.98	6.89	7.87	
M	0.12	0.12	0.14	0.16	
Net Weight (lbs)	8	8	17	22	

Dimensions and illustrations are for reference only and subject to change without notice.



AC & DC ELECTRIC WINCHES

Features

- Two-braking system mechanical and dynamic
- Fully-enclosed gearing
- Machine cut and hardened gears
- Lightweight
- Emergency handle
- Easily bolts on to OZ davit cranes

Capacity

OZACW (115V AC): 1200 lbs.
OZDCW (12V DC): 1200 lbs.

Net Weight

OZACW – 22 lbs.
OZDCW – 24 lbs.

Maximum Drum Capacity

3/16" diameter wire rope=90' lift
1/4" diameter wire rope=45' lift

Pendant/ Power Cord Length

115V AC: 10' Pendant
10' Power Cord
12V DC: 10' Pendant
25' (+) Power Lead

Motor Full Load AMPS

OZACW – 1.0 HP OZACW – 10A
OZDCW – 0.6 HP OZDCW – 70A



OZACW

**3 minutes of continuous use
15 minute cool down**

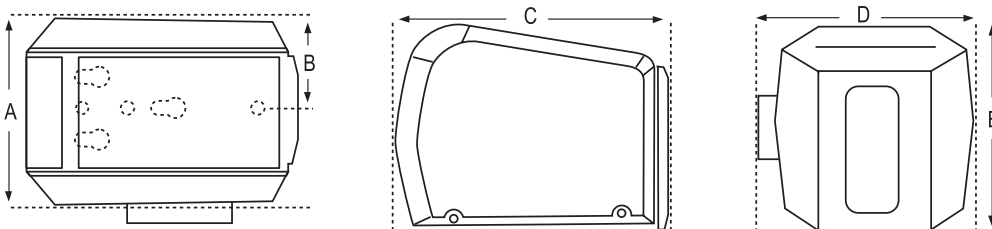


OZDCW

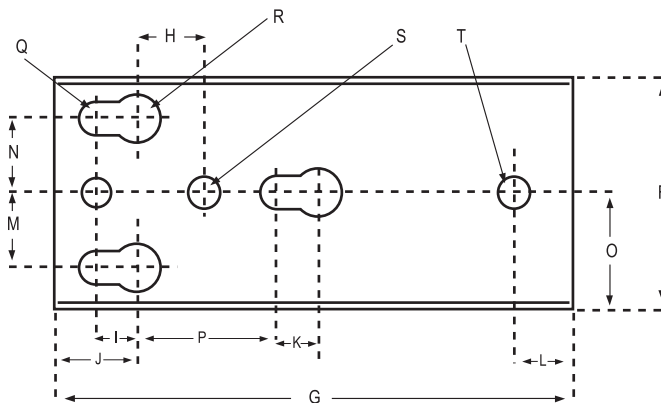


Load Capacity Based on the Amount of Cable	3/16" Cable	1/4" Cable
1st Layer (lbs)	800	1200
Mid. Drum (lbs)	800	1120
Full (lbs)	800	850

Winch Speed Based on Load & Cable on the Drum	First Layer	Full
AC, No Load (ft/min)	23	35
AC, Full Load (ft/min)	12	16
DC, No Load (ft/min)	21	33
DC, Full Load (ft/min)	5.5	8



Dimensions – All Models (in)	
A	7.43
B	3.57
C	10.81
D	8.18
E	8.12



Mounting Plate

Mounting Plate Dimensions – All Models (in)		
F	3.62	K .62
G	8.68	L 1
H	1.18	M 1.25
I	.625	N 1.25
J	1.37	O 1.81
		P 3
		Q .53
		R .78
		S .42
		T .50

Dimensions and illustrations are for reference only and subject to change without notice.

