

# COMPOZITE ELITE® DAVIT CRANE

Individually tested and certified at 125% W.L.L



OZCF1200DAV



Ultra  
lightweight  
& portable

1200 lbs. Capacity

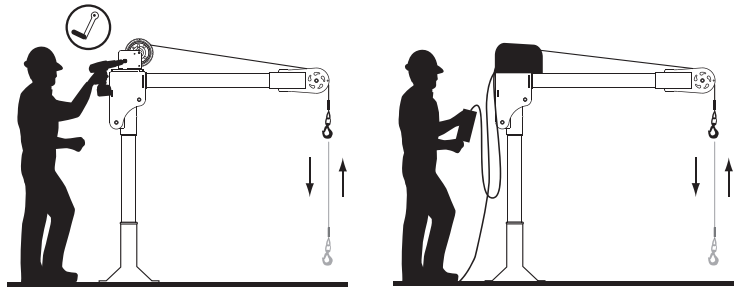
## Features

- Carbon fiber / High-strength aluminum construction
- Corrosion Resistant Finish
- Truly Portable Design
- One-Person Assembly (No Tools Needed)
- Manual Din rated CE winch with brake (Includes power drill adaptor)
- Synthetic Rope Assembly Available
- Headache Ball (OZHB10) available and sold separately
- Carrying case (OZRB1) available and sold separately

**WIRE/SYNTHETIC ROPE ASSEMBLIES**  
(sold separately) Custom length available.

OZ1000DAV shown with optional  
OZPED2 Pedestal base and  
OZGAL.25-55B wire rope assembly  
Bases and cable assemblies sold separately

## Options for faster lowering and raising



Manual winch w/drill drive adaptor

AC and DC power winches available  
See page 25

## Weight

Weight (excluding winch)	Boom	Mast	Net
OZCF1200DAV (lbs)	18	13	31

## Load Ratings (lbs.)

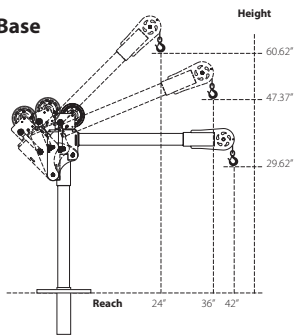
Based on 1/4" wire or 3/16 synthetic rope

	1st. Layer	Mid. Drum	Full Drum
Position 1 (0°)	500	500	500
Position 2 (+22.5°)	700	700	550
Position 3 (+45°)	1200	875	55

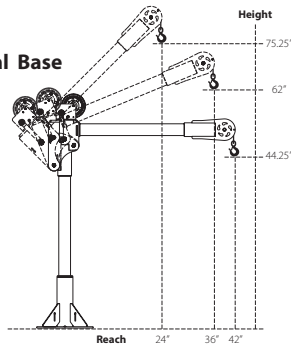
Manual winch: 3/16" - 80 ft max. lift length • 1/4" - 55ft max. lift length  
AC/DC Electric Winch: 3/16" - 90 ft max. lift length • 1/4" - 45ft max. lift length  
See wire & synthetic rope assembly options on the next page

## OZCF1200DAV DIMENSIONS

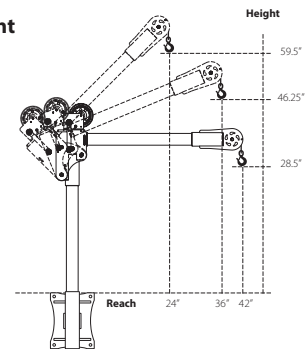
### w/ Socket Base



### w/ Pedestal Base

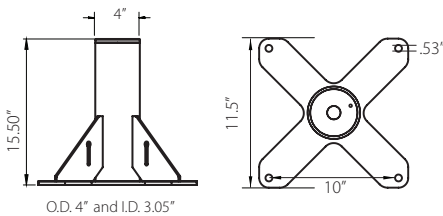


### w/ Wall Mount

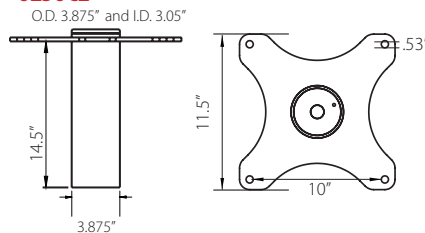


**OZCF1200DAV BASES** (sold separately) Comes with mounting template.

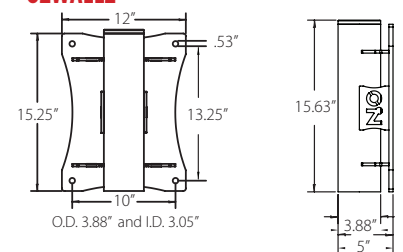
### OZPED2



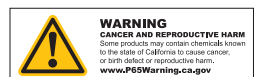
### OZSOC2



### OZWALL2



Dimensions and illustrations are for reference only and subject to change without notice.



# WIRE/SYNTHETIC ROPE ASSEMBLIES

## Steel Wire Rope (For manual winch)

OZGAL.19-80B	3/16" x 80'	Galvanized cable assembly
OZSS.19-80B	3/16" x 80'	Stainless steel cable assembly
OZGAL.25-55B	1/4" x 55'	Galvanized cable assembly
OZSS.25-55B	1/4" x 55'	Stainless steel cable assembly

Above cable assemblies come with swaged ball and swivel hook with latch.

**Custom cable length available.**

3/16" - 80 ft max. length • 1/4" - 55ft max. length

## Steel Wire Rope (For manual and power winch)

OZGAL.19-90	3/16" x 90'	Galvanized cable assembly
OZSS.19-90	3/16" x 90'	Stainless Steel cable assembly
OZGAL.25-45	1/4" x 45'	Galvanized cable assembly
OZSS.25-45	1/4" x 45'	Stainless Steel cable assembly

All cable assemblies come with a swivel hook with latch.

**Custom cable length available.**

3/16" - 90 ft max. length • 1/4" - 45ft max. length

## Synthetic Rope

OZSR.19-15	3/16" x 15'	Ultrax Synthetic Rope
OZSR.19-50	3/16" x 50'	Ultrax Synthetic Rope
OZSR.19-90	3/16" x 90'	Ultrax Synthetic Rope
OZSR.25-50	1/4" x 50'	Ultrax Synthetic Rope
OZSR.25-75	1/4" x 75'	Ultrax Synthetic Rope
OZSR.31-55	5/16" x 55'	Ultrax Synthetic Rope
OZSR.38-45	3/8" x 45'	Ultrax Synthetic Rope

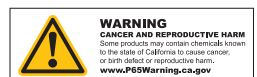
All synthetic rope assemblies come with looped ends and pre-installed swivel hook with latch



## HEADACHE BALL

OZHB10

Keeps your wire rope tensioned even when lowering the hook with no load. Compatible with 3/16" and 1/4" wire rope assemblies. Headache balls sold separately from all davit cranes and wire rope assemblies.





## DAVIT CRANE COVER

OZDAV-C1

Protect your davit crane from the elements with this waterproof cover. Compatible with all OZ Lifting Products davit cranes 1200 lbs. capacity or less excluding the XR series.

**COMING SOON**



\*Optional floor anchoring system

## PORTABLE DAVIT BASE

For all OZ Lifting davit cranes up to 1200 lbs capacity

- Optional floor anchoring system allows the davit to rotate while under load (when base is not anchored the davit must remain in a forward position when lifting)
- Oversized casters make rolling the base and moving loads easy
- Compatible with all OZ lifting davit cranes up to 1200 lbs capacity
- Durable steel construction with powder coat finish
- Davit crane sold separately
- Patent pending



# CARBON STEEL & STAINLESS STEEL BRAKE WINCHES

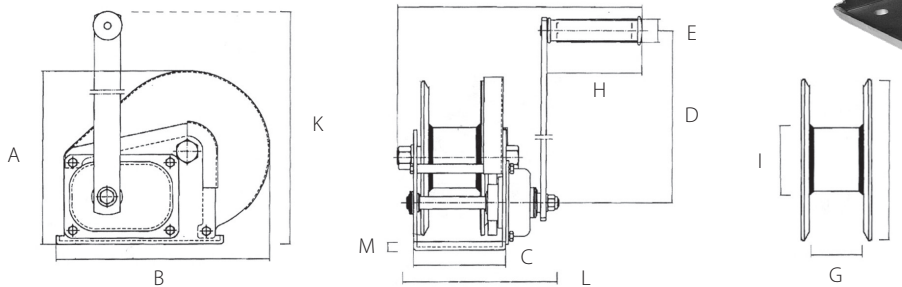
## Features

- Compact design
- Ergonomic rubber handle
- Multiple frame mounting positions
- Solid machined gear
- Dual cable anchor point
- Drill drive adapter standard on stainless steel. Optional on carbon steel
- Automatic weatherproof weston style load brake
- High gear ratio
- Test certificate & serial number
- For lifting or pulling/tensioning
- Left hand version of stainless steel winch available (OZ1000BWSS-LH)

## Standard - CE

Cable/Drum Capacity	1st layer (ft)	Mid drum (ft)	Full drum (ft)
OZ1000BW – OZ1000BWSS using 1/8" wire rope	7	74	140
OZ1000BW – OZ1000BWSS using 3/16" wire rope	5	34	75
OZ1500BW – OZ1500BWSS using 3/16" wire rope	7	66	140
OZ1500BW – OZ1500BWSS using 1/4" wire rope	5	27	89
OZ2000BW – OZ2000BWSS using 1/4" wire rope	8	36	85
OZ2000BW – OZ2000BWSS using 5/16" wire rope	7	22	52

Load Capacity (lbs - based on the amount of wire rope)			
OZ1000BW – OZ1000BWSS	1000	750	500
OZ1500BW – OZ1500BWSS	1500	1250	750
OZ2000BW – OZ2000BWSS	2000	1500	1000



	OZ1000BW	OZ1000BWSS	OZ1500BW – OZ1500BWSS	OZ2000BW – OZ2000BWSS	
Capacity (lbs)	1000	1000	1500	2000	
Gear Ratio	4.2:1	4.2:1	5:1	10:1	
Dimensions (in)	A	6.22	7.73	8.35	
	B	7.20	7.20	9.36	11.10
	C	3.46	3.46	4.21	5.00
	D	8.26	8.26	12.68	12.99
	E	1.06	1.06	1.06	1.06
	F	10.43	10.43	10.63	11.81
	G	1.98	1.98	2.30	2.52
	H	4.29	4.29	4.29	4.29
	I	1.59	1.98	2.38	3.00
	J	5.33	5.33	7.00	7.09
	K	10.20	10.20	15.31	15.35
L	5.98	5.98	6.89	7.87	
M	0.12	0.12	0.14	0.16	
Net Weight (lbs)	8	8	17	22	

Dimensions and illustrations are for reference only and subject to change without notice.



# AC & DC ELECTRIC WINCHES

## Features

- Two-braking system mechanical and dynamic
- Fully-enclosed gearing
- Machine cut and hardened gears
- Lightweight
- Emergency handle
- Easily bolts on to OZ davit cranes

## Capacity

OZACW (115V AC): 1200 lbs.  
OZDCW (12V DC): 1200 lbs.

## Net Weight

OZACW – 22 lbs.  
OZDCW – 24 lbs.

## Maximum Drum Capacity

3/16" diameter wire rope=90' lift  
1/4" diameter wire rope=45' lift

## Pendant/ Power Cord Length

115V AC: 10' Pendant  
10' Power Cord  
12V DC: 10' Pendant  
25' (+) Power Lead

## Motor Full Load AMPS

OZACW – 1.0 HP      OZACW – 10A  
OZDCW – 0.6 HP      OZDCW – 70A



OZACW

**3 minutes of continuous use  
15 minute cool down**



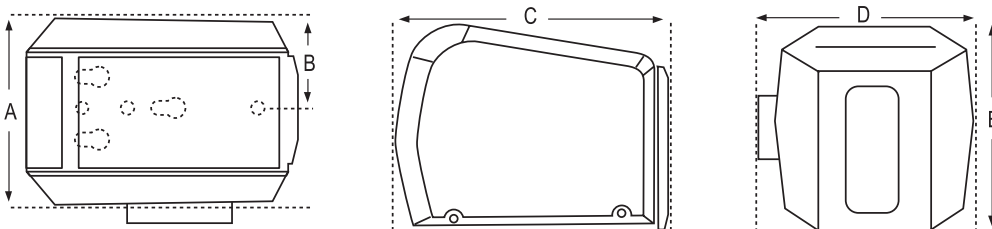
OZDCW



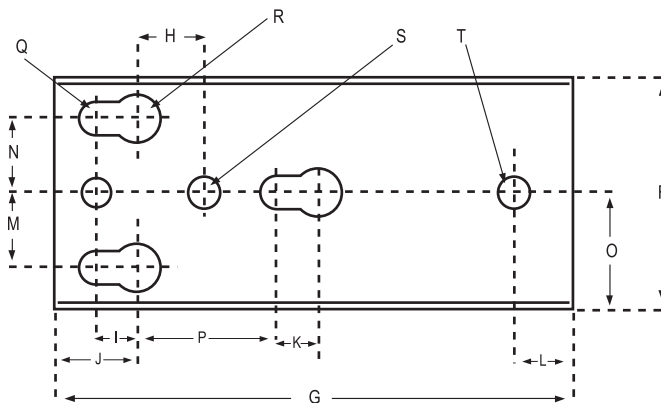
Load Capacity Based on the Amount of Cable	3/16" Cable	1/4" Cable
1st Layer (lbs)	800	1200
Mid. Drum (lbs)	800	1120
Full (lbs)	800	850

Winch Speed Based on Load & Cable on the Drum	First Layer	Full
AC, No Load (ft/min)	23	35
AC, Full Load (ft/min)	12	16
DC, No Load (ft/min)	21	33
DC, Full Load (ft/min)	5.5	8



Dimensions – All Models (in)	
A	7.43
B	3.57
C	10.81
D	8.18
E	8.12



## Mounting Plate

Mounting Plate Dimensions – All Models (in)		
F	3.62	K .62
G	8.68	L 1
H	1.18	M 1.25
I	.625	N 1.25
J	1.37	O 1.81
		P 3
		Q .53
		R .78
		S .42
		T .50

Dimensions and illustrations are for reference only and subject to change without notice.

