

LIFTING[®] **PRODUCTS**



Rev. 09/27/23

ALUMI-LITE® DAVIT CRANE

Individually tested and certified a t 125% W.L.L

OZA500DAV, OZA1000DAV



Ultra lightweight & portable

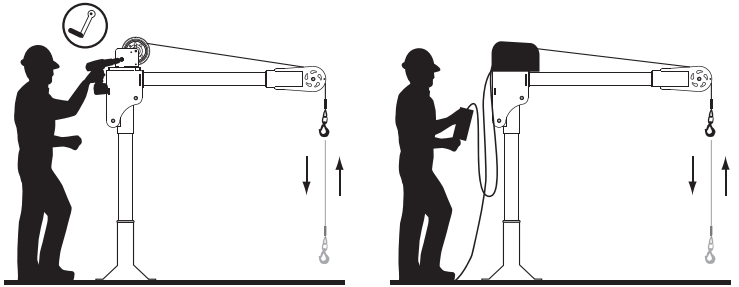
500 lbs. and 1,000 lbs. Capacity

Features

- Lightweight aerospace grade aluminum construction
- 360 degree rotation
- 3 different boom height adjustments
- Durable powder coat finish
- Truly Portable Design
- One-Person Assembly (No Tools Needed)
- Manual Din rated CE winch with brake (Includes power drill adaptor)
- AC & DC winch options

OZA5000DAV shown with optional OZPED3 Pedestal base and OZGAL.19-50B galvanized wire rope assembly and OZHB10 headache ball
Bases, cable assemblies and headache ball sold separately

Options for faster lowering and raising



Manual winch w/drill drive adaptor

AC and DC power winches available
See page 25

Weight

Weight (excluding winch)	Boom	Mast	Net
OZA500DAV (lbs)	12	12	24
OZA1000DAV (lbs)	25	22	47

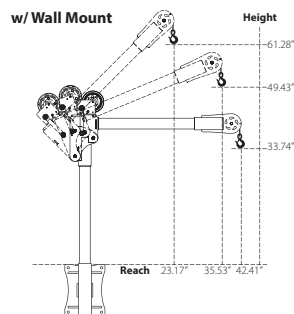
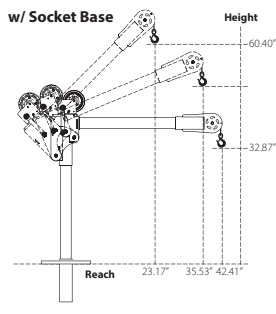
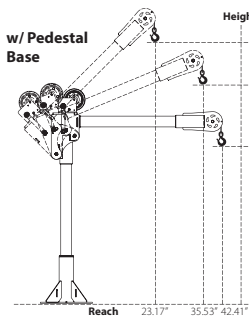
WIRE/SYNTHETIC ROPE ASSEMBLIES

(sold separately) Custom length available.

Manual winch: 3/16" - 80 ft max. lift length
AC/DC Electric Winch: 3/16" - 90 ft max. lift length

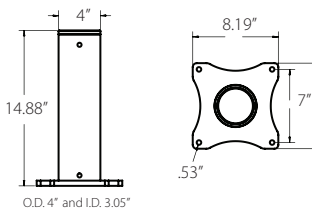
See wire & synthetic rope assembly options page 38

OZA500DAV DIMENSIONS

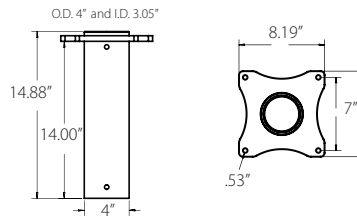


OZA500DAV BASES (sold separately) Comes with mounting template.

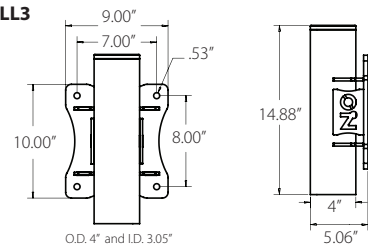
OZPED3



OZSOC3



OZWALL3



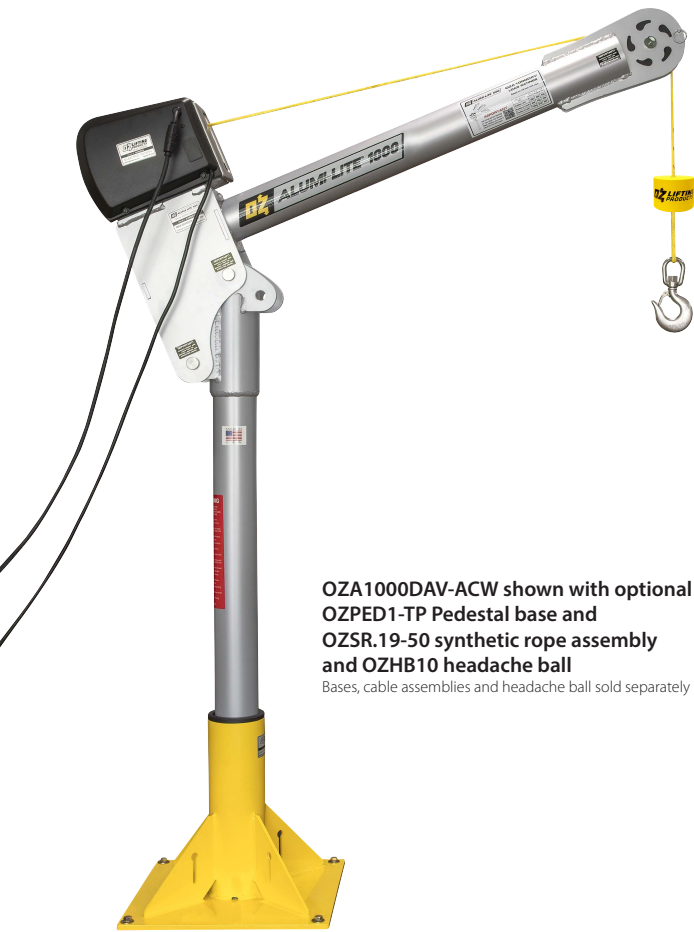
Dimensions and illustrations are for reference only and subject to change without notice.

OZA500DAV Load Ratings (lbs.)

Based on 3/16" wire rope

	1st. Layer	Mid. Drum	Full Drum
Position 1 (0°)	275	275	275
Position 2 (+22.5°)	330	330	330
Position 3 (+45°)	500	500	500





OZA1000DAV-ACW shown with optional
OZPED1-TP Pedestal base and
OZSR.19-50 synthetic rope assembly
 and **OZHB10** headache ball
 Bases, cable assemblies and headache ball sold separately

WIRE/SYNTHETIC ROPE ASSEMBLIES

(sold separately) Custom length available.

Manual winch: 1/4" - 55ft max. lift length

AC/DC Electric Winch: 1/4" - 45ft max. lift length

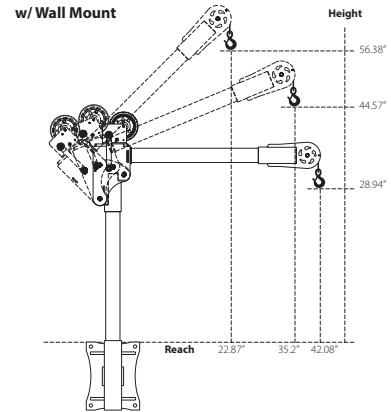
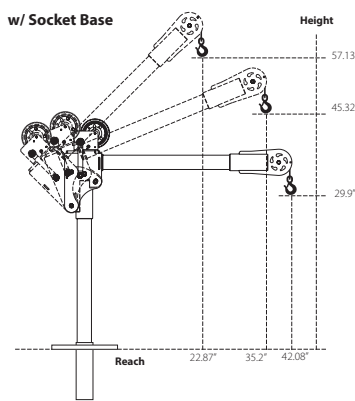
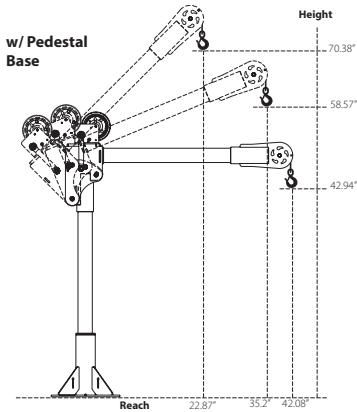
See wire & synthetic rope assembly options page 38

OZA1000DAV Load Ratings (lbs.)

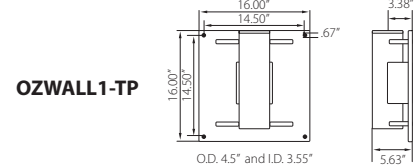
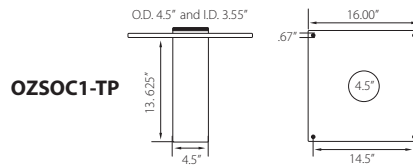
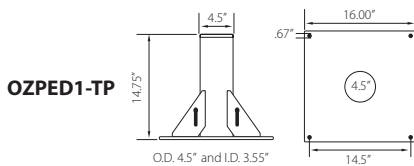
Based on 1/4" wire or 3/16" Upretex synthetic rope

	1st. Layer	Mid. Drum	Full Drum
Position 1 (0°)	550	550	550
Position 2 (+22.5°)	650	650	550
Position 3 (+45°)	1000	875	550

OZA1000DAV DIMENSIONS



OZA1000DAV BASES (sold separately) Comes with mounting template.



Dimensions and illustrations are for reference only and subject to change without notice.



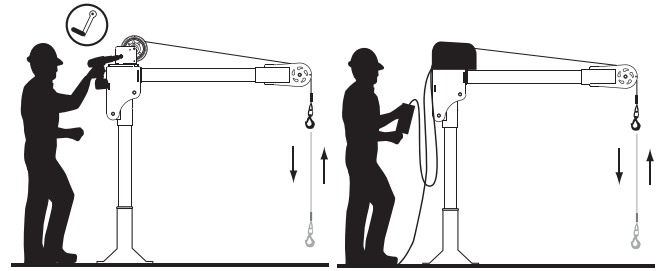
XR SERIES® DAVIT CRANE

Individually tested and certified at 125% W.L.L

OZXR500DAV, OZXR1000DAV



Options for faster lowering and raising



Manual winch w/drill drive adapter

AC and DC power winches available
See page 25

500 lbs. and 1,000 lbs. Capacity

Features

- Maximum 62-inch reach and 87-inch hook height (both models)
- Maintains maximum weight capacity in all positions
- 360 degree rotation
- 4 different boom height adjustments
- Manual Din rated CE winch with brake. Includes power drill drive adapter
- Durable steel construction with powder coat finish
- Manual Din rated CE winch with brake (Includes power drill adaptor)
- AC & DC winch options

Weight

Weight (excluding winch)	Boom	Mast	Net
OZXR500DAV (lbs)	26	26	57
OZXR1000DAV (lbs)	46	41	95

OZXR500DAV Load Ratings (lbs.)

Based on 3/16" wire rope

	1st. Layer	Mid. Drum	Full Drum
All positions	500	500	500

OZXR500DAV-ACW shown with optional OZPED3 Pedestal base and OZSR.19-50 synthetic rope assembly and OZHB10 headache ball

Bases, cable assemblies and headache ball sold separately

WIRE/SYNTHETIC ROPE ASSEMBLIES

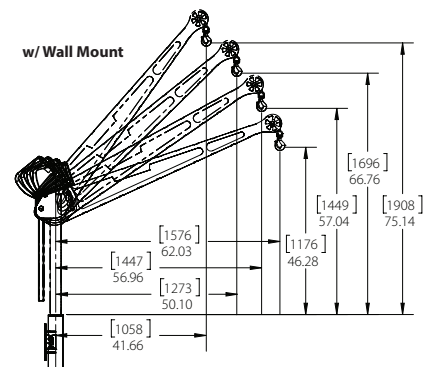
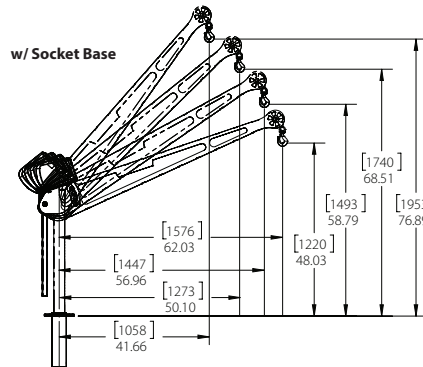
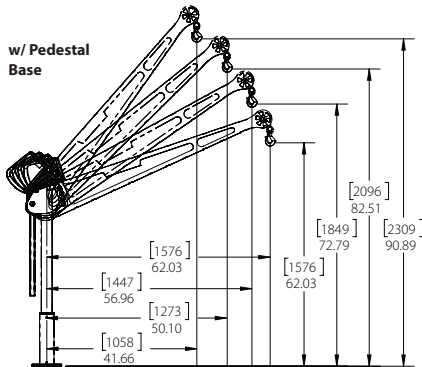
(sold separately) Custom length available.

Manual winch: 3/16" - 80 ft max. lift length

AC/DC Electric Winch: 3/16" - 90 ft max. lift length

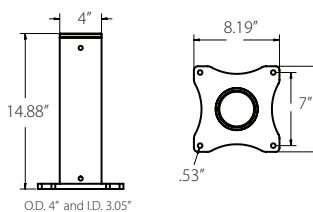
See wire & synthetic rope assembly options page 38

OZXR500DAV DIMENSIONS

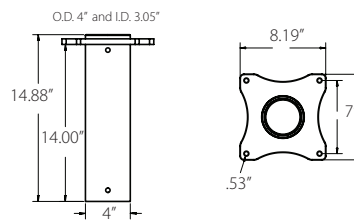


OZXR500DAV BASES (sold separately) Comes with mounting template.

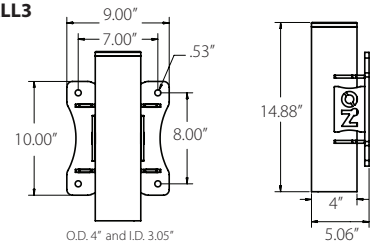
OZPED3



OZSOC3



OZWALL3



Dimensions and illustrations are for reference only and subject to change without notice.





OZXR1000DAV shown with optional
OZPED1-TP Pedestal base and
OZGAL.25-50B galvanized wire rope assembly
and OZHB10 headache ball
Bases, cable assemblies and headache ball sold separately



Handle comes standard
on both the XR 500 and
XR 1000

WIRE/SYNTHETIC ROPE ASSEMBLIES
(sold separately) Custom length available.

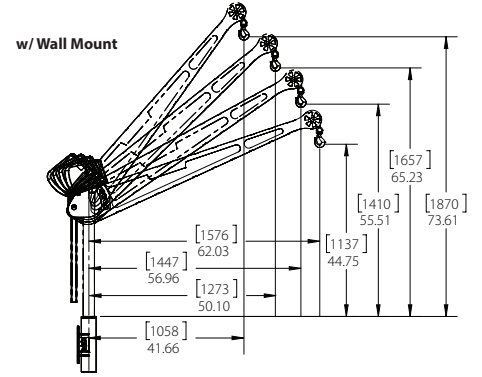
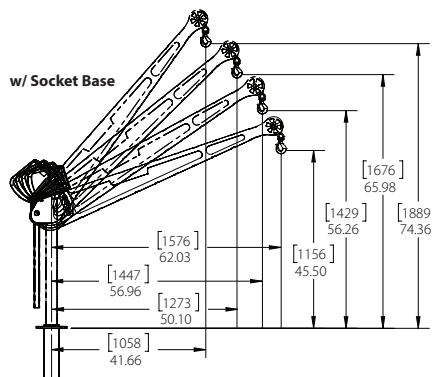
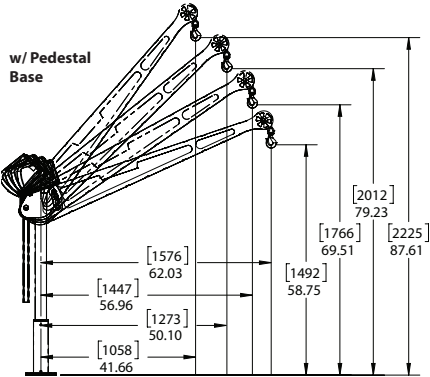
Manual winch: 1/4" - 55ft max. lift length
AC/DC Electric Winch: 1/4" - 45ft max. lift length
See wire & synthetic rope assembly options page 38

OZXR1000DAV Load Ratings (lbs.)

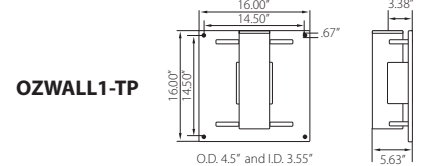
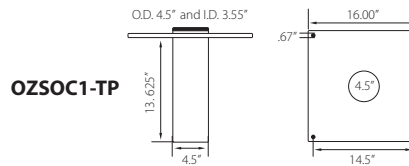
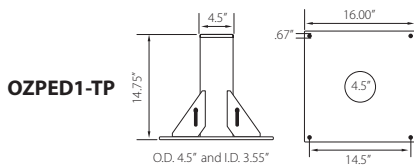
Based on 1/4" wire or 3/16" Ultrtex synthetic rope

	1st. Layer	Mid. Drum	Full Drum
Position 1 (0°)	550	550	550
Position 2 (+22.5°)	650	650	550
Position 3 (+45°)	1000	875	550

OZXR1000DAV DIMENSIONS



OZXR1000DAV BASES (sold separately) Comes with mounting template.



Dimensions and illustrations are for reference only and subject to change without notice.



TELE-PRO® DAVIT CRANE

Individually tested and certified at 125% W.L.L

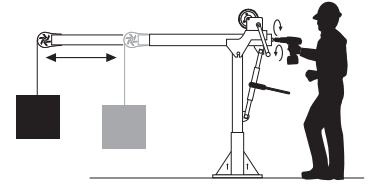
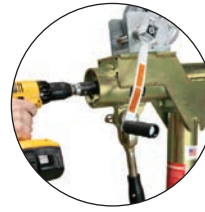
OZTP500DAV, OZTP1200DAV, OZTP2500DAV
[PATENTED]



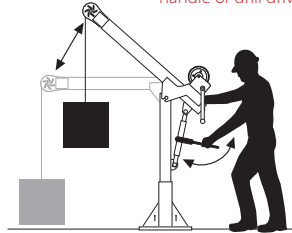
**500 lbs., 1200 lbs.
and 2500 lbs. Capacity**

Features

- Telescoping boom adjustment while under load
- Ratchet screw jack adjusts boom under load
- 360 degree rotation of crane on sleeve bearing
- DIN-Rated hand winch equipped standard with a load holding weatherproof Weston brake
- Quick connect winch handle with power drill adapter included
- Smart Latch technology at boom/mast connection
- Corrosion resistant zinc plated finish
- Headache Ball (OZHB10) available and sold separately
- Carrying case (OZRB1) available and sold separately (excludes TP2500)



Telescoping boom can be adjusted using the winch handle or drill drive adapter



Ratchet screw jack adjusts boom under load

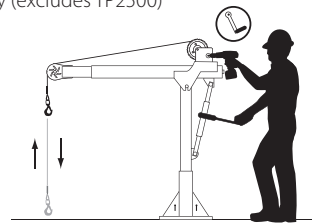
Weight

Weight (excluding winch)	Boom	Mast	Net
OZTP500DAV (lbs)	88	23	111
OZTP1200DAV (lbs)	102	36	138
OZTP2500DAV (lbs)	288	62	350

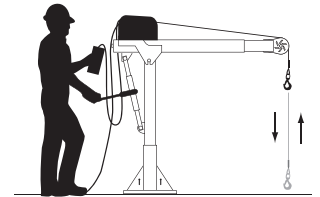
OZTP1200DAV shown with optional OZPED1-TP pedestal base and OZGAL.25-55B wire rope assembly
Bases and cable assemblies sold separately

WIRE/SYNTHETIC ROPE ASSEMBLIES (sold separately)

All cable assemblies come with swaged ball and swivel hook with latch. Custom cable length available.



Detach winch handle for drill option



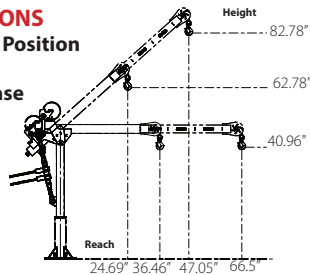
AC and DC power winches available
See page 25

Manual winch: 3/16" - 80 ft max. lift length • 1/4" - 55ft max. lift length
AC/DC Electric Winch: 3/16" - 90 ft max. lift length • 1/4" - 45ft max. lift length
See wire & synthetic rope assemblies page 38

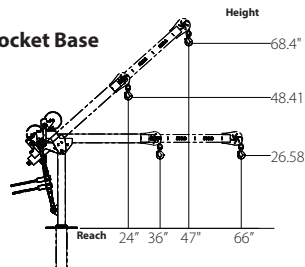
OZTP500DAV DIMENSIONS

Horizontal and 45° Boom Position

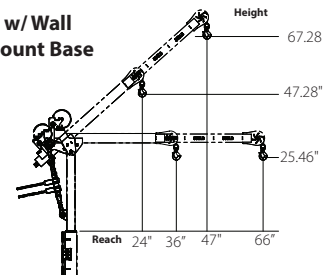
w/ Pedestal Base



w/ Socket Base

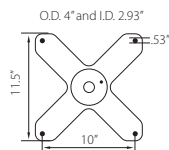
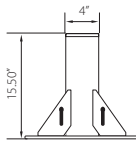


w/ Wall Mount Base

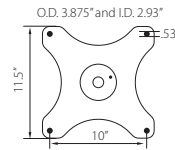
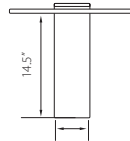


OZTP500DAV BASES (sold separately) Comes with mounting template.

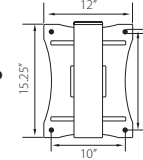
OZPED2-TP



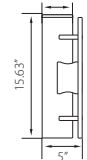
OZSOC2-TP



OZWALL2-TP



O.D. 3.88" and I.D. 2.93"



OZTP500DAV LOAD RATINGS – Horizontal Boom Angle

– Based on 3/16 inch wire or Ultrtex synthetic rope

Load Ratings (lbs.)	1st. Layer	Mid Drum	Full Drum
Boom Position 1 at 36°	500 lbs.	500 lbs.	500 lbs.
Boom Position 2 at 46°	430 lbs.	430 lbs.	430 lbs.
Boom Position 3 at 56°	350 lbs.	350 lbs.	350 lbs.
Boom Position 4 at 66°	300 lbs.	300 lbs.	300 lbs.

Load ratings shown are based on a manual winch. Load ratings will vary depending on wire or synthetic rope length and diameter. Dimensions and illustrations are for reference only and subject to change without notice.

OZTP500DAV LOAD RATINGS – 45° Boom Angle

– Based on 3/16 inch wire or Ultrtex synthetic rope

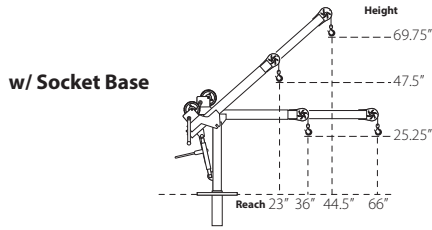
Load Ratings (lbs.)	1st. Layer	Mid Drum	Full Drum
Boom Position 1 at 23°	500 lbs.	500 lbs.	500 lbs.
Boom Position 2 at 30°	500 lbs.	500 lbs.	500 lbs.
Boom Position 3 at 37°	500 lbs.	500 lbs.	500 lbs.
Boom Position 4 at 44°	450 lbs.	450 lbs.	450 lbs.



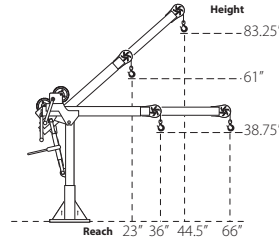
WARNING
CANCER AND REPRODUCTIVE HARM
Some products may contain chemicals known to the state of California to cause cancer, or birth defect or reproductive harm.
www.P65Warning.ca.gov

OZTP1200DAV DIMENSIONS

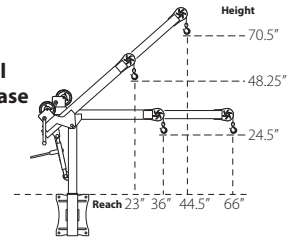
Horizontal and 45° Boom Position



w/ Pedestal Base

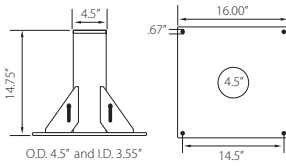


w/ Wall Mount Base

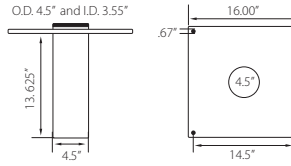


OZTP1200DAV BASES (sold separately) Comes with mounting template.

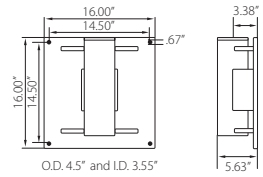
OZPED1-TP



OZSOC1-TP



OZWALL1-TP



OZTP1200DAV LOAD RATINGS – Horizontal Boom Angle

– Based on 3/16 inch wire rope

Load Ratings (lbs.)	1st. Layer	Mid Drum	Full Drum
Boom Position 1 at 36°	800 lbs.	800 lbs.	550 lbs.
Boom Position 2 at 46°	800 lbs.	800 lbs.	550 lbs.
Boom Position 3 at 56°	750 lbs.	750 lbs.	550 lbs.
Boom Position 4 at 66°	650 lbs.	650 lbs.	550 lbs.

OZTP1200DAV LOAD RATINGS – Horizontal Boom Angle

– Based on 1/4 inch wire rope or 3/16 inch Ultrax synthetic rope

Load Ratings (lbs.)	1st. Layer	Mid Drum	Full Drum
Boom Position 1 at 36°	1200 lbs.	875 lbs.	550 lbs.
Boom Position 2 at 46°	900 lbs.	875 lbs.	550 lbs.
Boom Position 3 at 56°	750 lbs.	750 lbs.	550 lbs.
Boom Position 4 at 66°	650 lbs.	650 lbs.	550 lbs.

OZTP1200DAV LOAD RATINGS – 45° Boom Angle

– Based on 3/16 inch wire rope

Load Ratings (lbs.)	1st. Layer	Mid Drum	Full Drum
Boom Position 1 at 23°	800 lbs.	800 lbs.	550 lbs.
Boom Position 2 at 30.25°	800 lbs.	800 lbs.	550 lbs.
Boom Position 3 at 37.25°	800 lbs.	800 lbs.	550 lbs.
Boom Position 4 at 44.5°	800 lbs.	800 lbs.	550 lbs.

OZTP1200DAV LOAD RATINGS – 45° Boom Angle

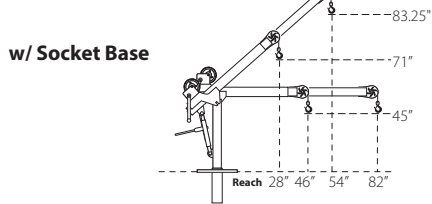
– Based on 1/4 inch wire rope or 3/16 inch Ultrax synthetic rope

Load Ratings (lbs.)	1st. Layer	Mid Drum	Full Drum
Boom Position 1 at 23°	1200 lbs.	875 lbs.	550 lbs.
Boom Position 2 at 30.25°	1200 lbs.	875 lbs.	550 lbs.
Boom Position 3 at 37.25°	1100 lbs.	875 lbs.	550 lbs.
Boom Position 4 at 44.5°	950 lbs.	875 lbs.	550 lbs.

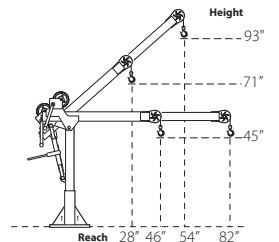
Load ratings shown are based on a manual winch • See page 25 for electric winch load ratings.

OZTP2500DAV DIMENSIONS

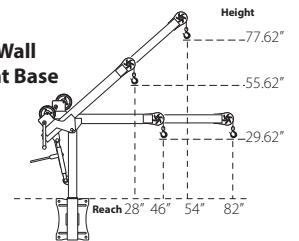
Horizontal and 45° Boom Position



w/ Pedestal Base

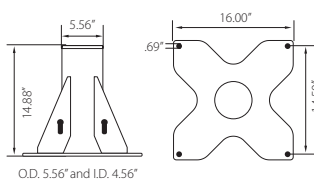


w/ Wall Mount Base

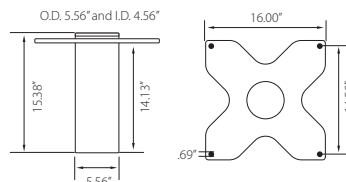


OZTP2500DAV BASES (sold separately) Comes with mounting template.

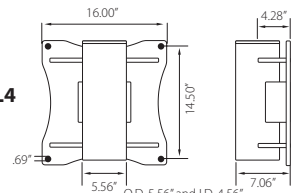
OZPED4



OZSOC4



OZWALL4



OZTP2500DAV LOAD RATINGS – Horizontal Boom Angle

– Based on 1/4 inch Ultrax synthetic rope

Load Ratings (lbs.)	1st. Layer	Mid Drum	Full Drum
Boom Position 1 at 46°	2000 lbs.	2000 lbs.	1550 lbs.
Boom Position 2 at 58°	1900 lbs.	1900 lbs.	1550 lbs.
Boom Position 3 at 70°	1600 lbs.	1600 lbs.	1550 lbs.
Boom Position 4 at 82°	1300 lbs.	1300 lbs.	1300 lbs.

OZTP2500DAV LOAD RATINGS – Horizontal Boom Angle

– Based on 3/8 inch Ultrax synthetic rope

Load Ratings (lbs.)	1st. Layer	Mid Drum	Full Drum
Boom Position 1 at 46°	2500 lbs.	2015 lbs.	1550 lbs.
Boom Position 2 at 58°	1900 lbs.	1900 lbs.	1550 lbs.
Boom Position 3 at 70°	1600 lbs.	1600 lbs.	1550 lbs.
Boom Position 4 at 82°	1300 lbs.	1300 lbs.	1300 lbs.

OZTP2500DAV LOAD RATINGS – 45° Boom Angle

– Based on 1/4 inch Ultrax synthetic rope

Load Ratings (lbs.)	1st. Layer	Mid Drum	Full Drum
Boom Position 1 at 28°	2000 lbs.	2000 lbs.	1550 lbs.
Boom Position 2 at 37°	2000 lbs.	2000 lbs.	1550 lbs.
Boom Position 3 at 45.5°	2000 lbs.	2000 lbs.	1550 lbs.
Boom Position 4 at 54°	2000 lbs.	2000 lbs.	1550 lbs.

OZTP2500DAV LOAD RATINGS – 45° Boom Angle

– Based on 3/8 inch Ultrax synthetic rope

Load Ratings (lbs.)	1st. Layer	Mid Drum	Full Drum
Boom Position 1 at 28°	2500 lbs.	2015 lbs.	1550 lbs.
Boom Position 2 at 37°	2500 lbs.	2015 lbs.	1550 lbs.
Boom Position 3 at 45.5°	2500 lbs.	2015 lbs.	1550 lbs.
Boom Position 4 at 54°	2000 lbs.	2000 lbs.	1550 lbs.

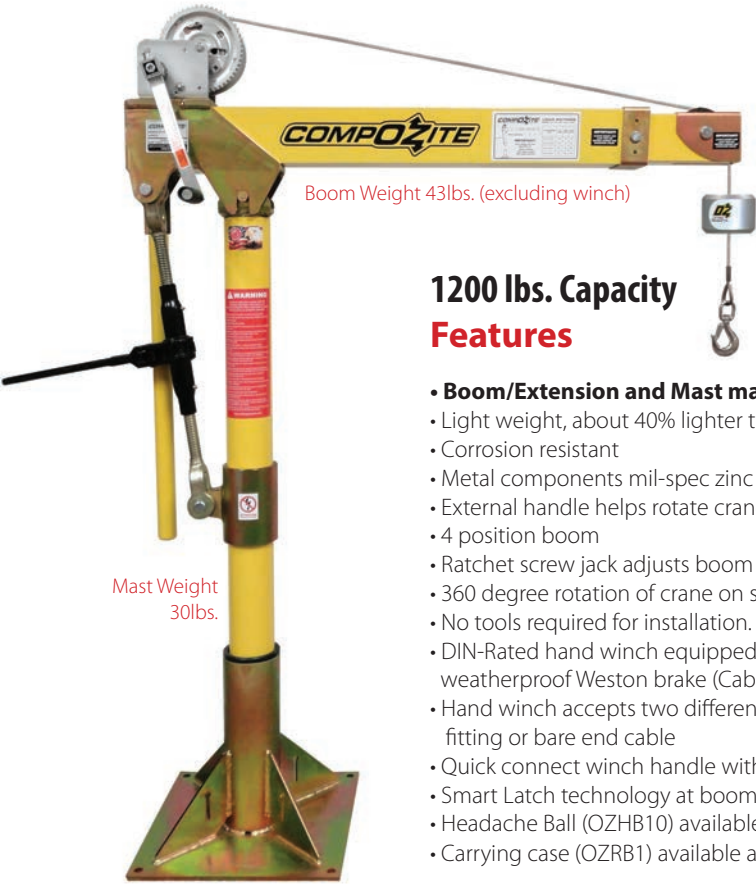
Load ratings shown are based on a manual winch • Load ratings will vary depending on wire or synthetic rope length and diameter. Dimensions and illustrations are for reference only and subject to change without notice.

COMPOZITE® DAVIT CRANE

Individually tested and certified at 125%



OZ1200DAV (PATENTED)



Boom Weight 43lbs. (excluding winch)

Mast Weight 30lbs.

1200 lbs. Capacity Features

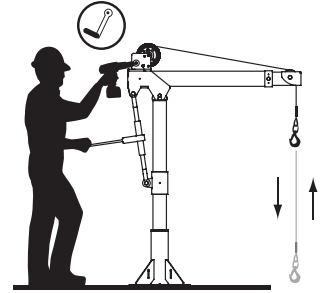
- **Boom/Extension and Mast made of Advanced Composite Material**
- Light weight, about 40% lighter than steel
- Corrosion resistant
- Metal components mil-spec zinc plated
- External handle helps rotate crane under load
- 4 position boom
- Ratchet screw jack adjusts boom under load giving you infinite range of lift
- 360 degree rotation of crane on sleeve bearing
- No tools required for installation. One person setup.
- DIN-Rated hand winch equipped standard with a load holding weatherproof Weston brake (Cable assembly sold separately)
- Hand winch accepts two different cable termination points: swaged ball fitting or bare end cable
- Quick connect winch handle with power drill adapter included
- Smart Latch technology at boom/mast connection
- Headache Ball (OZHB10) available and sold separately. See page 34
- Carrying case (OZRB1) available and sold separately



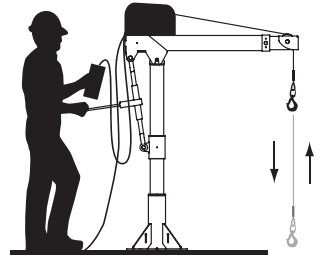
Crane weighs only 83 lbs. As Shown

One person set up. No tools required for installation. Lightweight & Portable.

Options for faster lowering and raising



Detach winch handle for drill option



AC and DC power winches available See page 25

Weight

Weight (excluding winch)	Boom	Mast	Net
OZ1200DAV (lbs)	43	30	73

OZ1200DAV shown with optional OZPED1 Pedestal base, OZSS.25-55B wire rope assembly, and OZHB10 headache ball
Bases, cable assemblies and headache ball sold separately

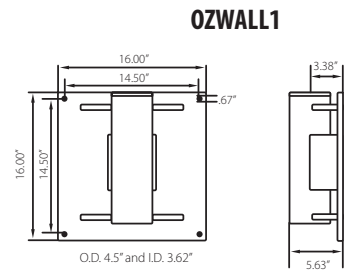
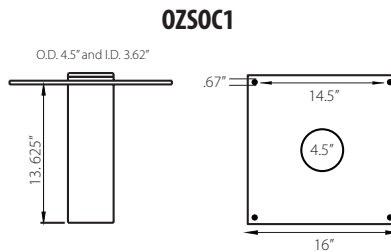
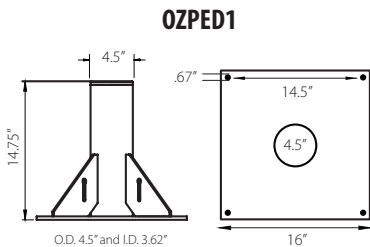
WIRE/SYNTHETIC ROPE ASSEMBLIES

(sold separately) Custom length available.

See wire/synthetic rope assembly options page 38

Manual winch: 3/16" - 80 ft max. lift length • 1/4" - 55ft max. lift length
AC/DC Electric Winch: 3/16" - 90 ft max. lift length • 1/4" - 45ft max. lift length

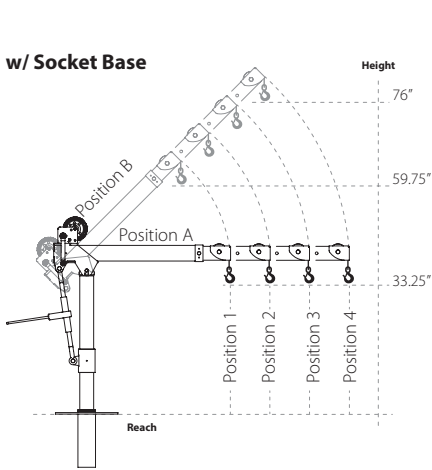
OZ1200DAV BASES (sold separately) Comes with mounting template.



Dimensions and illustrations are for reference only and subject to change without notice.



OZ1200DAV DIMENSIONS Dimensions are for reference only and subject to change without notice.

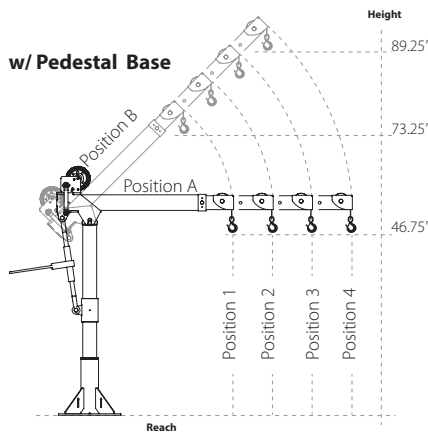


Boom Horizontal Position (A)

- Boom Position 1: Reach 36"
- Boom Position 2: Reach 46"
- Boom Position 3: Reach 56"
- Boom Position 4: Reach 66"

Boom 45° Position (B)

- Boom Position 1: Reach 22"
- Boom Position 2: Reach 29"
- Boom Position 3: Reach 36"
- Boom Position 4: Reach 43"

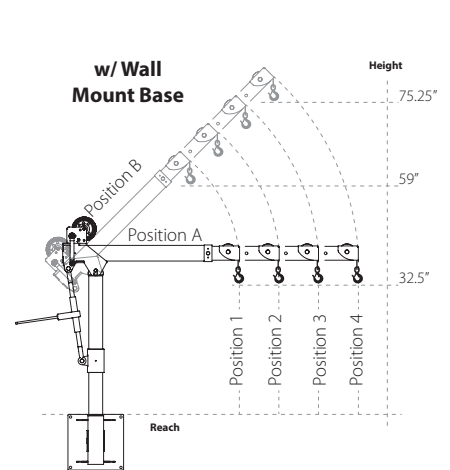


Boom Horizontal Position (A)

- Boom Position 1: Reach 36"
- Boom Position 2: Reach 46"
- Boom Position 3: Reach 56"
- Boom Position 4: Reach 66"

Boom 45° Position (B)

- Boom Position 1: Reach 22"
- Boom Position 2: Reach 29"
- Boom Position 3: Reach 36"
- Boom Position 4: Reach 43"

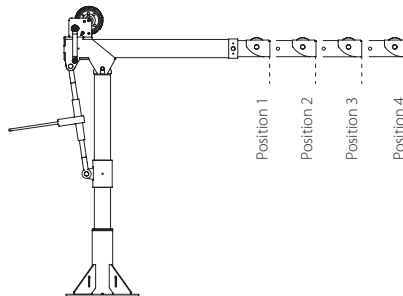


Boom Horizontal Position (A)

- Boom Position 1: Reach 36"
- Boom Position 2: Reach 46"
- Boom Position 3: Reach 56"
- Boom Position 4: Reach 66"

Boom 45° Position (B)

- Boom Position 1: Reach 22"
- Boom Position 2: Reach 29"
- Boom Position 3: Reach 36"
- Boom Position 4: Reach 43"



Load Ratings OZ1200DAV

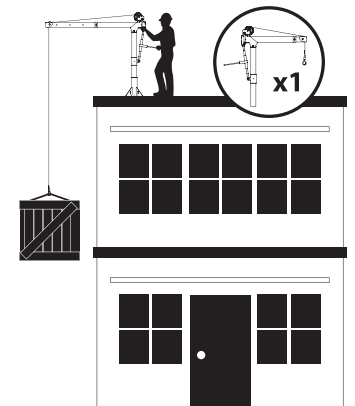
*Table based on 1/4 inch wire rope or 3/16" Upretex Synthetic Rope

Load Ratings	1st. Layer	Mid. Drum	Full Drum
Position 1 (lbs)	1200	875	550
Position 2 (lbs)	900	875	550
Position 3 (lbs)	700	700	550
Position 4 (lbs)	400	400	400

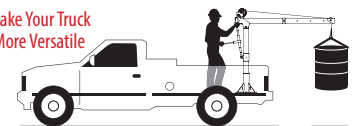
*Table based on 3/16" wire rope

Load Ratings	1st. Layer	Mid. Drum	Full Drum
Position 1 (lbs)	800	800	550
Position 2 (lbs)	800	800	550
Position 3 (lbs)	700	700	550
Position 4 (lbs)	400	400	400

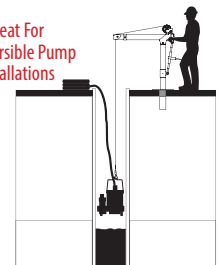
Designed for use in multiple workstations. Buy one crane and multiple bases.



Make Your Truck More Versatile



Great For Submersible Pump Installations



STEEL DAVIT CRANE

Individually tested and certified at 125% W.L.L

OZ500DAV, OZ1000DAV, OZ2500DAV



500 lbs., 1000 lbs. and 2500 lbs. Capacity

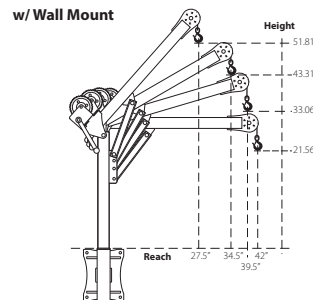
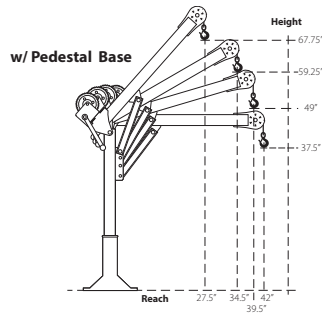
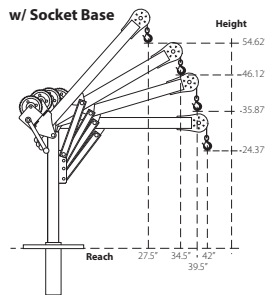
Features

- 360 degree rotation
- 4 different boom height adjustments
- 500, 1000, and 2500 lb. ratings available
- Manual Din rated CE winch with brake (Includes power drill adaptor)
- Corrosion Resistant Zinc plated finish
- Headache Ball (OZHB10) available and sold separately
- Carrying case (OZRB1) available and sold separately



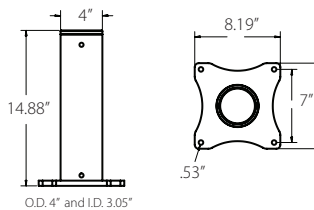
OZ1000DAV shown with optional OZPED2 Pedestal base and OZGAL.25-55B wire rope assembly
Bases and cable assemblies sold separately

OZ500DAV DIMENSIONS

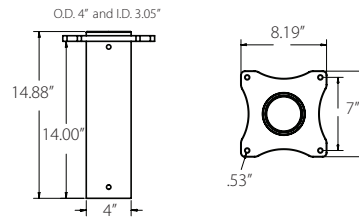


OZ500DAV BASES (sold separately) Comes with mounting template.

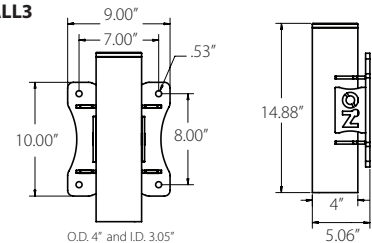
OZPED3



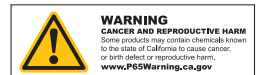
OZSOC3



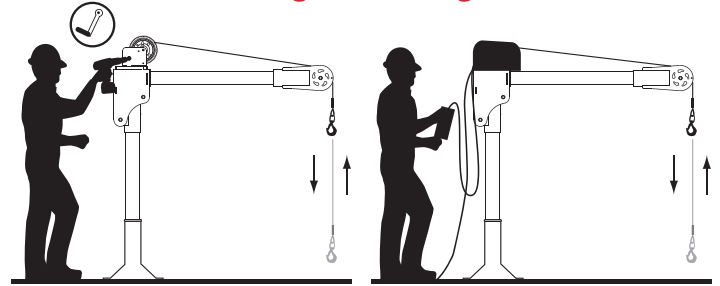
OZWALL3



Dimensions and illustrations are for reference only and subject to change without notice.



Options for faster lowering and raising



Detach winch handle for drill option

AC and DC power winches available
See page 25

Weight

Weight (excluding winch)	Boom	Mast	Net
OZ500DAV (lbs)	27	23	50
OZ1000DAV (lbs)	35	29	64
OZ2500DAV (lbs)	130	64	194

OZ500DAV & OZ1000DAV

Manual winch: 3/16" - 80 ft max. lift length • 1/4" - 55ft max. lift length

AC/DC Electric Winch: 3/16" - 90 ft max. lift length • 1/4" - 45ft max. lift length

OZ2500DAV

Manual winch: 1/4" Synthetic - 75 ft max. lift length • 5/16" Ultrex - 55ft max. lift length

lift length • 3/8" Synthetic - 45ft max. lift length

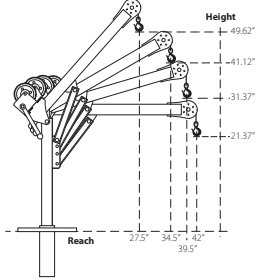
Load Ratings

*OZ500DAV based on 3/16" wire & synthetic rope

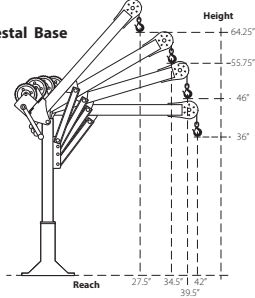
1st. Layer	500 lbs
Mid. Drum	500 lbs
Full Drum	500 lbs

OZ1000DAV DIMENSIONS

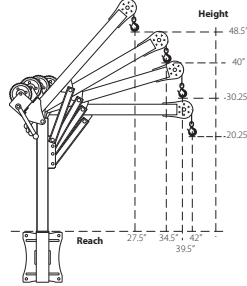
w/ Socket Base



w/ Pedestal Base



w/ Wall Mount



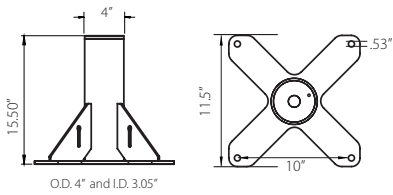
Load Ratings

*OZ1000DAV based on 1/4" wire & 3/16" Ultrex synthetic rope

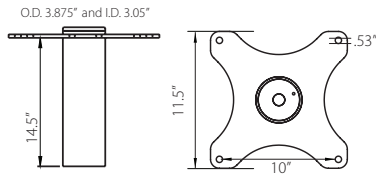
1st. Layer	1000 lbs
Mid. Drum	875 lbs
Full Drum	550 lbs

OZ1000DAV BASES (sold separately) *Base inside diameter 3.0" • Comes with mounting template.

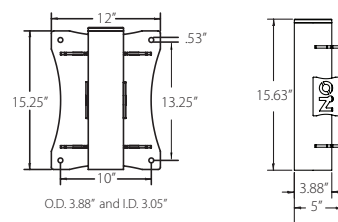
OZPED2



OZSOC2



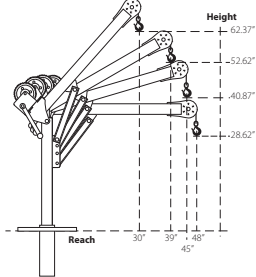
OZWALL2



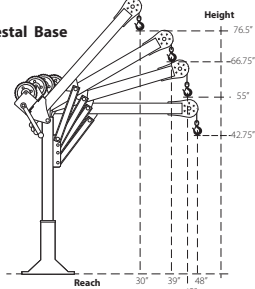
Dimensions and illustrations are for reference only and subject to change without notice.

OZ2500DAV DIMENSIONS

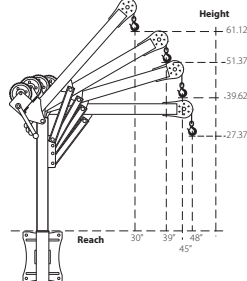
w/ Socket Base



w/ Pedestal Base



w/ Wall Mount



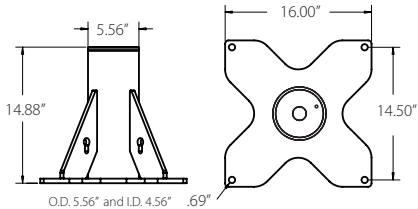
Load Ratings

*OZ2500DAV based on 3/8" synthetic rope

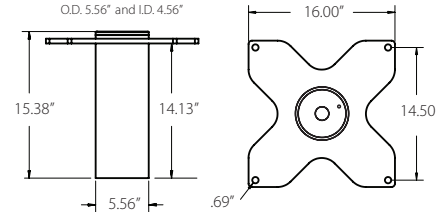
1st. Layer	2500 lbs
Mid. Drum	2000 lbs
Full Drum	1550 lbs

OZ2500DAV BASES (sold separately) *Base inside diameter 4.5" • Comes with mounting template.

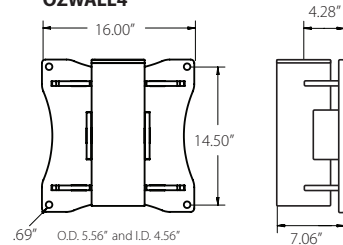
OZPED4



OZSOC4



OZWALL4



Dimensions and illustrations are for reference only and subject to change without notice.



COMPOZITE ELITE® DAVIT CRANE

Individually tested and certified at 125% W.L.L

OZCF1200DAV



1200 lbs. Capacity

Features

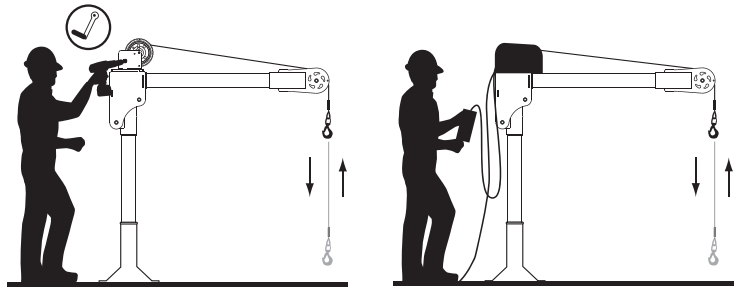
- Carbon fiber / High-strength aluminum construction
- Corrosion Resistant Finish
- Truly Portable Design
- One-Person Assembly (No Tools Needed)
- Manual Din rated CE winch with brake (Includes power drill adaptor)
- Synthetic Rope Assembly Available
- Headache Ball (OZHB10) available and sold separately
- Carrying case (OZRB1) available and sold separately

WIRE/SYNTHETIC ROPE ASSEMBLIES

(sold separately) Custom length available.

See wire/synthetic rope assembly options page 38

Options for faster lowering and raising



Manual winch w/drill drive adapter

AC and DC power winches available
See page 25

Weight

Weight (excluding winch)	Boom	Mast	Net
OZCF1200DAV (lbs)	18	13	31

Load Ratings (lbs.)

Based on 1/4" wire or 3/16 synthetic rope

	1st. Layer	Mid. Drum	Full Drum
Position 1 (0°)	500	500	500
Position 2 (+22.5°)	700	700	550
Position 3 (+45°)	1200	875	55

Manual winch: 3/16" - 80 ft max. lift length • 1/4" - 55ft max. lift length

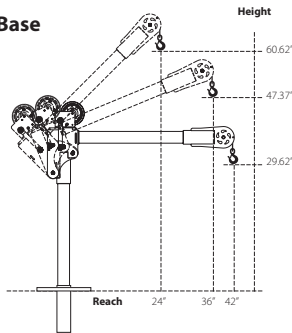
AC/DC Electric Winch: 3/16" - 90 ft max. lift length • 1/4" - 45ft max. lift length

See wire & synthetic rope assembly options page 38

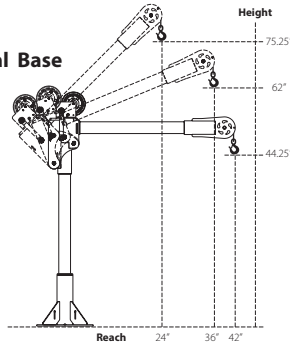
OZ1000DAV shown with optional OZPED2 Pedestal base and OZGAL.25-55B wire rope assembly
Bases and cable assemblies sold separately

OZCF1200DAV DIMENSIONS

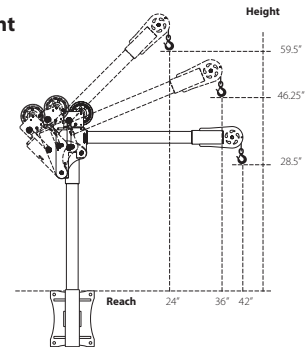
w/ Socket Base



w/ Pedestal Base

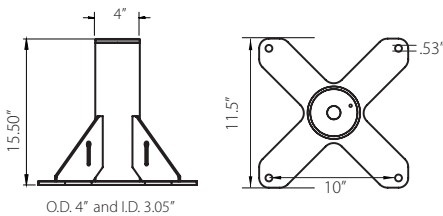


w/ Wall Mount

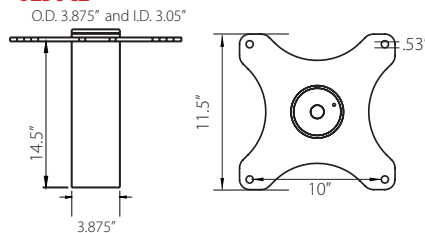


OZCF1200DAV BASES (sold separately) Comes with mounting template.

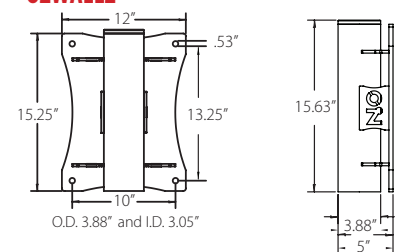
OZPED2



OZSOC2



OZWALL2



Dimensions and illustrations are for reference only and subject to change without notice.





APPLICATION DATA SHEET | DAVIT CRANES

Date: _____

P.O. Box 845 Winona, MN 55987 • Tf: (800) 749-1064 • Ph: (507) 474-6250 • Fax: (507) 452-5217 • sales@ozliftingproducts.com

Company Name: _____ Contact Name: _____

Email Address: _____

Phone: _____ Fax: _____

Address: _____ City: _____ State: _____ Zip Code: _____

1. JOB DESCRIPTION:

2. WEIGHT OF LOAD:

3. LENGTH OF LIFT:

4. DAVIT ARM REACH REQUIREMENTS:

5. WHAT CAPACITY DO YOU NEED AND WHAT REACH?

6. HEIGHT REQUIREMENTS:

7. WINCH REQUIREMENTS:

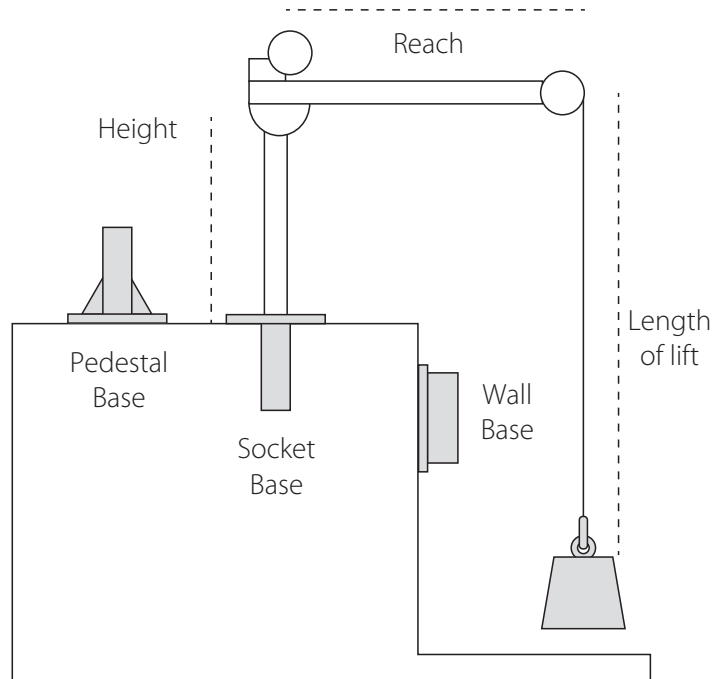
Hand 115 Volt AC 12 Volt DC

8. BASE REQUIREMENTS:

Pedestal Socket Wall Mount
 Base Extension

9. WHERE IS THE DAVIT CRANE BEING USED?

10. HOW DID YOU HEAR OF US?



Purchaser is responsible for proper base installation. Consulting with a civil engineer or qualified professional is highly recommended.

Each crane is tested at 125%.
Test cert included. Cable and base sold separately.

OZ Lifting products are not for lifting up people or objects over people.

Load ratings may vary depending on position of boom, wire rope length and winch used.

WIRE/SYNTHETIC ROPE ASSEMBLIES

Steel Wire Rope (For manual winch)

OZGAL.19-80B	3/16" x 80'	Galvanized cable assembly
OZSS.19-80B	3/16" x 80'	Stainless steel cable assembly
OZGAL.25-55B	1/4" x 55'	Galvanized cable assembly
OZSS.25-55B	1/4" x 55'	Stainless steel cable assembly

Above cable assemblies come with swaged ball and swivel hook with latch.

Custom cable length available.

3/16" - 80 ft max. length • 1/4" - 55ft max. length

Steel Wire Rope (For manual and power winch)

OZGAL.19-90	3/16" x 90'	Galvanized cable assembly
OZSS.19-90	3/16" x 90'	Stainless Steel cable assembly
OZGAL.25-45	1/4" x 45'	Galvanized cable assembly
OZSS.25-45	1/4" x 45'	Stainless Steel cable assembly

All cable assemblies come with a swivel hook with latch.

Custom cable length available.

3/16" - 90 ft max. length • 1/4" - 45ft max. length

Synthetic Rope

OZSR.19-15	3/16" x 15'	Ultrax Synthetic Rope
OZSR.19-50	3/16" x 50'	Ultrax Synthetic Rope
OZSR.19-90	3/16" x 90'	Ultrax Synthetic Rope
OZSR.25-50	1/4" x 50'	Ultrax Synthetic Rope
OZSR.25-75	1/4" x 75'	Ultrax Synthetic Rope
OZSR.31-55	5/16" x 55'	Ultrax Synthetic Rope
OZSR.38-45	3/8" x 45'	Ultrax Synthetic Rope

All synthetic rope assemblies come with looped ends and pre-installed swivel hook with latch



HEADACHE BALL

OZHB10

Keeps your wire rope tensioned even when lowering the hook with no load. Compatible with 3/16" and 1/4" wire rope assemblies. Headache balls sold separately from all davit cranes and wire rope assemblies.





DAVIT CRANE COVER

OZDAV-C1

Protect your davit crane from the elements with this waterproof cover. Compatible with all OZ Lifting Products davit cranes 1200 lbs. capacity or less excluding the XR series.

COMING SOON



*Optional floor anchoring system

WHEEL BASE

For all OZ Lifting davit cranes up to 1200 lbs capacity

- Optional floor anchoring system allows the davit to rotate while under load (when base is not anchored the davit must remain in a forward position when lifting)
- Oversized casters make rolling the base and moving loads easy
- Compatible with all OZ lifting davit cranes up to 1200 lbs capacity
- Durable steel construction with powder coat finish
- Davit crane sold separately
- Patent pending





P.O. Box 845, Winona, MN 55987

Distributed by
Tri-State Equipment Company Inc.
sales@tsoverheadcrane.com
www.tsoverheadcrane.com
Tel: (314) 869-7200

