

STEEL DAVIT CRANE

Individually tested and certified at 125% W.L.L

OZ500DAV, OZ1000DAV, OZ2500DAV



500 lbs., 1000 lbs. and 2500 lbs. Capacity

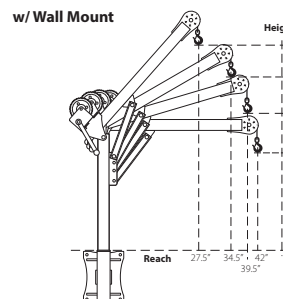
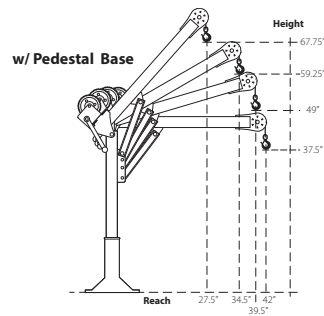
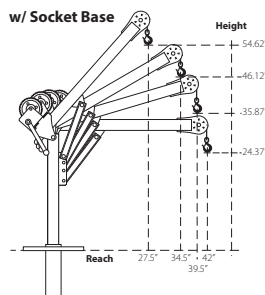
Features

- 360 degree rotation
- 4 different boom height adjustments
- 500, 1000, and 2500 lb. ratings available
- Manual Din rated CE winch with brake (Includes power drill adaptor)
- Corrosion Resistant Zinc plated finish
- Headache Ball (OZHB10) available and sold separately
- Carrying case (OZRB1) available and sold separately



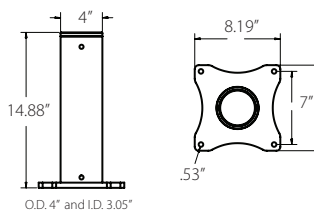
OZ1000DAV shown with optional OZPED2 Pedestal base and OZGAL.25-55B wire rope assembly
Bases and cable assemblies sold separately

OZ500DAV DIMENSIONS

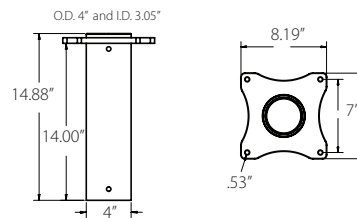


OZ500DAV BASES (sold separately) Comes with mounting template.

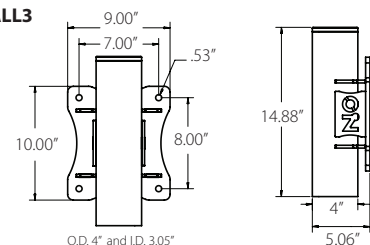
OZPED3



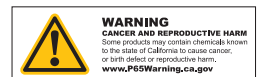
OZSOC3



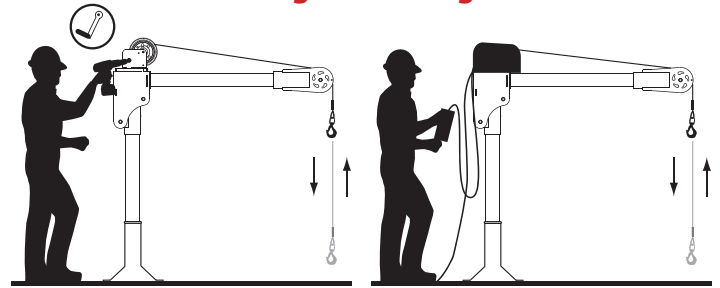
OZWALL3



Dimensions and illustrations are for reference only and subject to change without notice.



Options for faster lowering and raising



Detach winch handle for drill option

AC and DC power winches available
See page 25

Weight

Weight (excluding winch)	Boom	Mast	Net
OZ500DAV (lbs)	27	23	50
OZ1000DAV (lbs)	35	29	64
OZ2500DAV (lbs)	130	64	194

OZ500DAV & OZ1000DAV

Manual winch: 3/16" - 80 ft max. lift length • 1/4" - 55ft max. lift length

AC/DC Electric Winch: 3/16" - 90 ft max. lift length • 1/4" - 45ft max. lift length

OZ2500DAV

Manual winch: 1/4" Synthetic - 75 ft max. lift length • 5/16" Ultrex - 55ft max. lift length

3/8" Synthetic - 45ft max. lift length

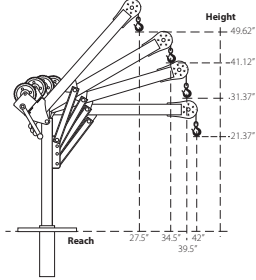
Load Ratings

*OZ500DAV based on 3/16" wire & synthetic rope

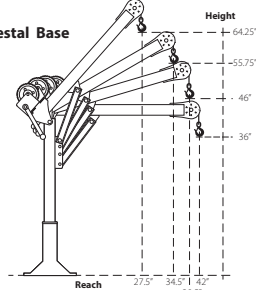
1st. Layer	500 lbs
Mid. Drum	500 lbs
Full Drum	500 lbs

OZ1000DAV DIMENSIONS

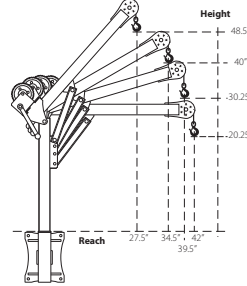
w/ Socket Base



w/ Pedestal Base



w/ Wall Mount



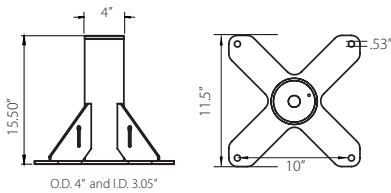
Load Ratings

*OZ1000DAV based on 1/4" wire & 3/16" Ultrex synthetic rope

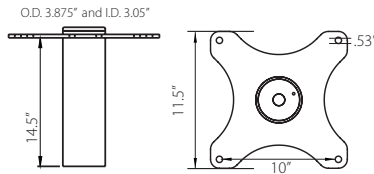
1st. Layer	1000 lbs
Mid. Drum	875 lbs
Full Drum	550 lbs

OZ1000DAV BASES (sold separately) *Base inside diameter 3.0" • Comes with mounting template.

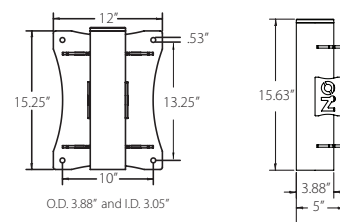
OZPED2



OZSOC2



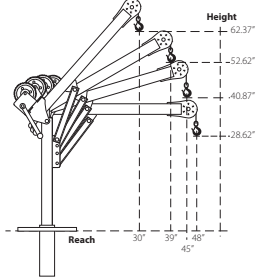
OZWALL2



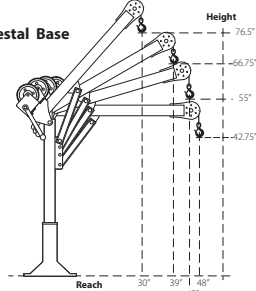
Dimensions and illustrations are for reference only and subject to change without notice.

OZ2500DAV DIMENSIONS

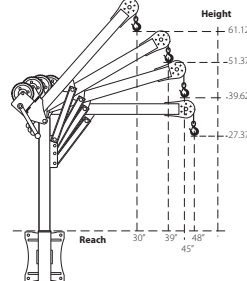
w/ Socket Base



w/ Pedestal Base



w/ Wall Mount



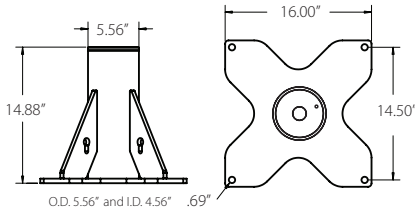
Load Ratings

*OZ2500DAV based on 3/8" synthetic rope

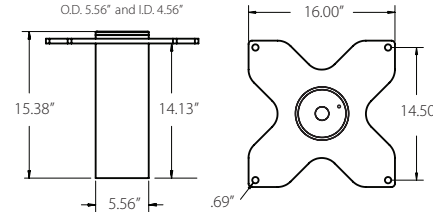
1st. Layer	2500 lbs
Mid. Drum	2000 lbs
Full Drum	1550 lbs

OZ2500DAV BASES (sold separately) *Base inside diameter 4.5" • Comes with mounting template.

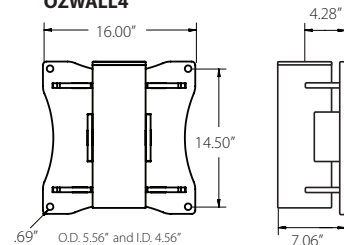
OZPED4



OZSOC4



OZWALL4



Dimensions and illustrations are for reference only and subject to change without notice.



WIRE/SYNTHETIC ROPE ASSEMBLIES

Steel Wire Rope (For manual winch)

OZGAL.19-80B	3/16" x 80'	Galvanized cable assembly
OZSS.19-80B	3/16" x 80'	Stainless steel cable assembly
OZGAL.25-55B	1/4" x 55'	Galvanized cable assembly
OZSS.25-55B	1/4" x 55'	Stainless steel cable assembly

Above cable assemblies come with swaged ball and swivel hook with latch.

Custom cable length available.

3/16" - 80 ft max. length • 1/4" - 55ft max. length

Steel Wire Rope (For manual and power winch)

OZGAL.19-90	3/16" x 90'	Galvanized cable assembly
OZSS.19-90	3/16" x 90'	Stainless Steel cable assembly
OZGAL.25-45	1/4" x 45'	Galvanized cable assembly
OZSS.25-45	1/4" x 45'	Stainless Steel cable assembly

All cable assemblies come with a swivel hook with latch.

Custom cable length available.

3/16" - 90 ft max. length • 1/4" - 45ft max. length

Synthetic Rope

OZSR.19-15	3/16" x 15'	Ultrax Synthetic Rope
OZSR.19-50	3/16" x 50'	Ultrax Synthetic Rope
OZSR.19-90	3/16" x 90'	Ultrax Synthetic Rope
OZSR.25-50	1/4" x 50'	Ultrax Synthetic Rope
OZSR.25-75	1/4" x 75'	Ultrax Synthetic Rope
OZSR.31-55	5/16" x 55'	Ultrax Synthetic Rope
OZSR.38-45	3/8" x 45'	Ultrax Synthetic Rope

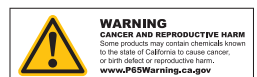
All synthetic rope assemblies come with looped ends and pre-installed swivel hook with latch



HEADACHE BALL

OZHB10

Keeps your wire rope tensioned even when lowering the hook with no load. Compatible with 3/16" and 1/4" wire rope assemblies. Headache balls sold separately from all davit cranes and wire rope assemblies.





DAVIT CRANE COVER

OZDAV-C1

Protect your davit crane from the elements with this waterproof cover. Compatible with all OZ Lifting Products davit cranes 1200 lbs. capacity or less excluding the XR series.

COMING SOON



*Optional floor anchoring system

PORTABLE DAVIT BASE

For all OZ Lifting davit cranes up to 1200 lbs capacity

- Optional floor anchoring system allows the davit to rotate while under load (when base is not anchored the davit must remain in a forward position when lifting)
- Oversized casters make rolling the base and moving loads easy
- Compatible with all OZ lifting davit cranes up to 1200 lbs capacity
- Durable steel construction with powder coat finish
- Davit crane sold separately
- Patent pending



CARBON STEEL & STAINLESS STEEL BRAKE WINCHES

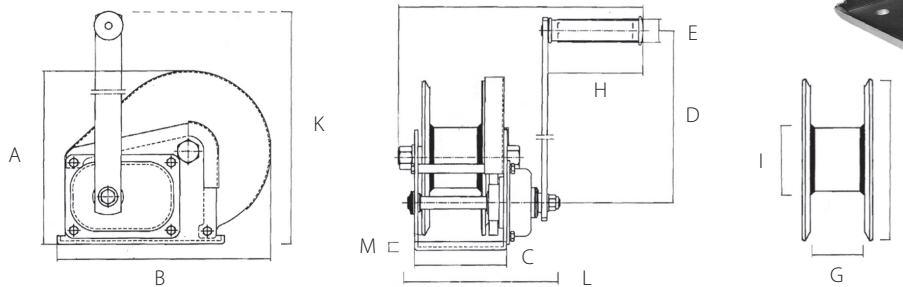
Features

- Compact design
- Ergonomic rubber handle
- Multiple frame mounting positions
- Solid machined gear
- Dual cable anchor point
- Drill drive adapter standard on stainless steel. Optional on carbon steel
- Automatic weatherproof weston style load brake
- High gear ratio
- Test certificate & serial number
- For lifting or pulling/tensioning
- Left hand version of stainless steel winch available (OZ1000BWSS-LH)

Standard - CE

Cable/Drum Capacity	1st layer (ft)	Mid drum (ft)	Full drum (ft)
OZ1000BW – OZ1000BWSS using 1/8" wire rope	7	74	140
OZ1000BW – OZ1000BWSS using 3/16" wire rope	5	34	75
OZ1500BW – OZ1500BWSS using 3/16" wire rope	7	66	140
OZ1500BW – OZ1500BWSS using 1/4" wire rope	5	27	89
OZ2000BW – OZ2000BWSS using 1/4" wire rope	8	36	85
OZ2000BW – OZ2000BWSS using 5/16" wire rope	7	22	52

Load Capacity (lbs - based on the amount of wire rope)			
OZ1000BW – OZ1000BWSS	1000	750	500
OZ1500BW – OZ1500BWSS	1500	1250	750
OZ2000BW – OZ2000BWSS	2000	1500	1000



	OZ1000BW	OZ1000BWSS	OZ1500BW – OZ1500BWSS	OZ2000BW – OZ2000BWSS
Capacity (lbs)	1000	1000	1500	2000
Gear Ratio	4.2:1	4.2:1	5:1	10:1
Dimensions (in)	A	6.22	6.22	7.73
	B	7.20	7.20	9.36
	C	3.46	3.46	4.21
	D	8.26	8.26	12.68
	E	1.06	1.06	1.06
	F	10.43	10.43	10.63
	G	1.98	1.98	2.30
	H	4.29	4.29	4.29
	I	1.59	1.98	2.38
	J	5.33	5.33	7.00
	K	10.20	10.20	15.31
L	5.98	5.98	6.89	
M	0.12	0.12	0.14	
Net Weight (lbs)	8	8	17	22



Dimensions and illustrations are for reference only and subject to change without notice.



AC & DC ELECTRIC WINCHES

Features

- Two-braking system mechanical and dynamic
- Fully-enclosed gearing
- Machine cut and hardened gears
- Lightweight
- Emergency handle
- Easily bolts on to OZ davit cranes

Capacity

OZACW (115V AC): 1200 lbs.
OZDCW (12V DC): 1200 lbs.

Net Weight

OZACW – 22 lbs.
OZDCW – 24 lbs.

Maximum Drum Capacity

3/16" diameter wire rope=90' lift
1/4" diameter wire rope=45' lift

Pendant/ Power Cord Length

115V AC: 10' Pendant
10' Power Cord
12V DC: 10' Pendant
25' (+) Power Lead

Motor Full Load AMPS

OZACW – 1.0 HP OZACW – 10A
OZDCW – 0.6 HP OZDCW – 70A



OZACW

**3 minutes of continuous use
15 minute cool down**

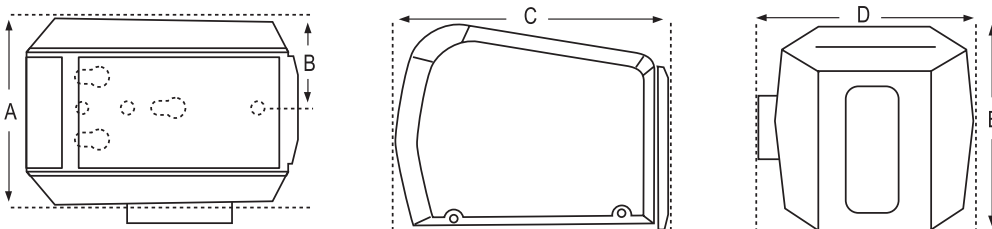


OZDCW

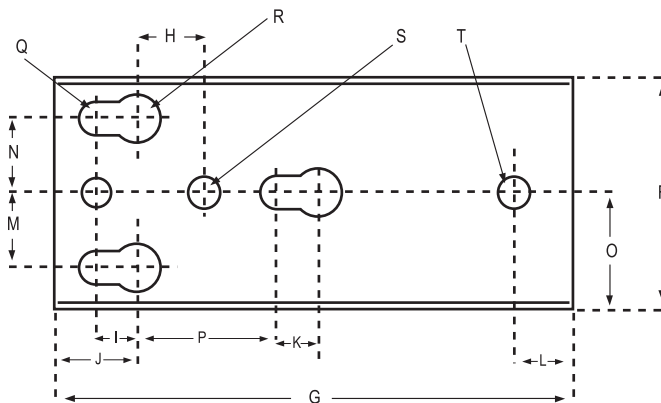


Load Capacity Based on the Amount of Cable	3/16" Cable	1/4" Cable
1st Layer (lbs)	800	1200
Mid. Drum (lbs)	800	1120
Full (lbs)	800	850

Winch Speed Based on Load & Cable on the Drum	First Layer	Full
AC, No Load (ft/min)	23	35
AC, Full Load (ft/min)	12	16
DC, No Load (ft/min)	21	33
DC, Full Load (ft/min)	5.5	8



Dimensions – All Models (in)	
A	7.43
B	3.57
C	10.81
D	8.18
E	8.12



Mounting Plate

Mounting Plate Dimensions – All Models (in)		
F	3.62	K .62
G	8.68	L 1
H	1.18	M 1.25
I	.625	N 1.25
J	1.37	O 1.81
		P 3
		Q .53
		R .78
		S .42
		T .50

Dimensions and illustrations are for reference only and subject to change without notice.

