

TELE-PRO® DAVIT CRANE

Individually tested and certified at 125% W.L.L

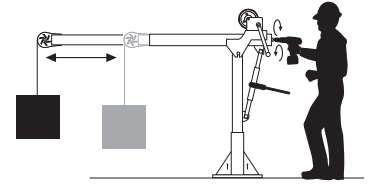
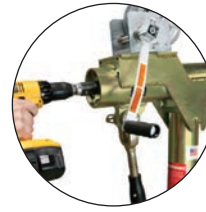
OZTP500DAV, OZTP1200DAV, OZTP2500DAV
[PATENTED]



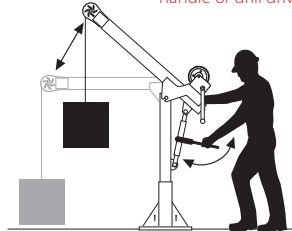
**500 lbs., 1200 lbs.
and 2500 lbs. Capacity**

Features

- Telescoping boom adjustment while under load
- Ratchet screw jack adjusts boom under load
- 360 degree rotation of crane on sleeve bearing
- DIN-Rated hand winch equipped standard with a load holding weatherproof Weston brake
- Quick connect winch handle with power drill adapter included
- Smart Latch technology at boom/mast connection
- Corrosion resistant zinc plated finish
- Headache Ball (OZHB10) available and sold separately
- Carrying case (OZRB1) available and sold separately (excludes TP2500)



Telescoping boom can be adjusted using the winch handle or drill drive adapter

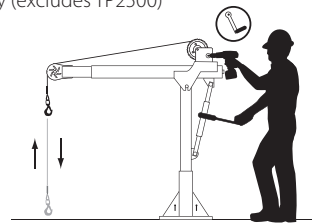


Ratchet screw jack adjusts boom under load

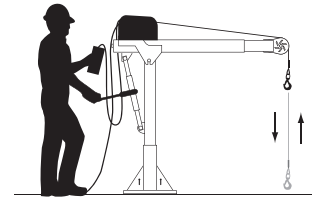
Weight

Weight (excluding winch)	Boom	Mast	Net
OZTP500DAV (lbs)	88	23	111
OZTP1200DAV (lbs)	102	36	138
OZTP2500DAV (lbs)	288	62	350

OZTP1200DAV shown with optional OZPED1-TP pedestal base and OZGAL.25-55B wire rope assembly
Bases and cable assemblies sold separately



Detach winch handle for drill option



AC and DC power winches available
See page 25

WIRE/SYNTHETIC ROPE ASSEMBLIES (sold separately)

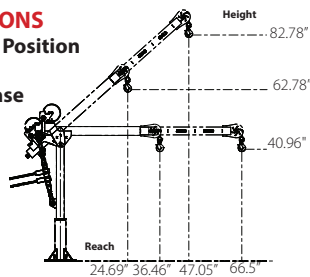
All cable assemblies come with swaged ball and swivel hook with latch. Custom cable length available.

Manual winch: 3/16" - 80 ft max. lift length • 1/4" - 55ft max. lift length
AC/DC Electric Winch: 3/16" - 90 ft max. lift length • 1/4" - 45ft max. lift length
See wire & synthetic rope assemblies on page 3

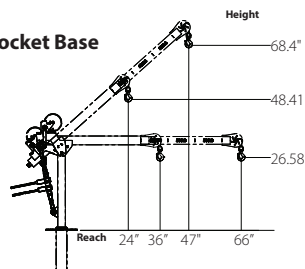
OZTP500DAV DIMENSIONS

Horizontal and 45° Boom Position

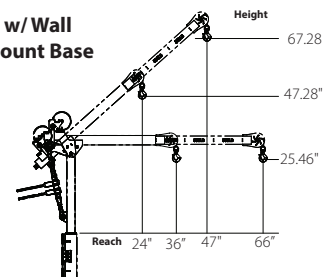
w/ Pedestal Base



w/ Socket Base

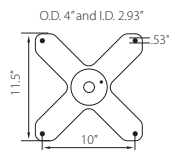
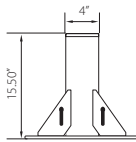


w/ Wall Mount Base

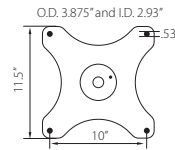
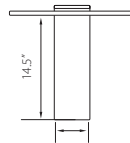


OZTP500DAV BASES (sold separately) Comes with mounting template.

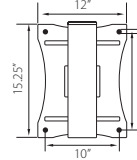
OZPED2-TP



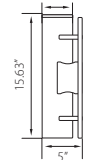
OZSOC2-TP



OZWALL2-TP



O.D. 3.88" and I.D. 2.93"



OZTP500DAV LOAD RATINGS – Horizontal Boom Angle

– Based on 3/16 inch wire or Ultrtex synthetic rope

Load Ratings (lbs.)	1st. Layer	Mid Drum	Full Drum
Boom Position 1 at 36°	500 lbs.	500 lbs.	500 lbs.
Boom Position 2 at 46°	430 lbs.	430 lbs.	430 lbs.
Boom Position 3 at 56°	350 lbs.	350 lbs.	350 lbs.
Boom Position 4 at 66°	300 lbs.	300 lbs.	300 lbs.

OZTP500DAV LOAD RATINGS – 45° Boom Angle

– Based on 3/16 inch wire or Ultrtex synthetic rope

Load Ratings (lbs.)	1st. Layer	Mid Drum	Full Drum
Boom Position 1 at 23°	500 lbs.	500 lbs.	500 lbs.
Boom Position 2 at 30°	500 lbs.	500 lbs.	500 lbs.
Boom Position 3 at 37°	500 lbs.	500 lbs.	500 lbs.
Boom Position 4 at 44°	450 lbs.	450 lbs.	450 lbs.

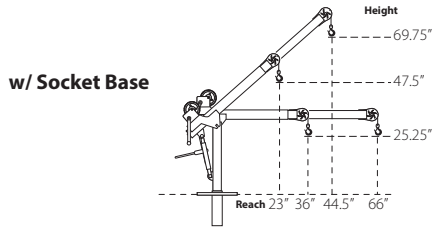
Load ratings shown are based on a manual winch. Load ratings will vary depending on wire or synthetic rope length and diameter. Dimensions and illustrations are for reference only and subject to change without notice.



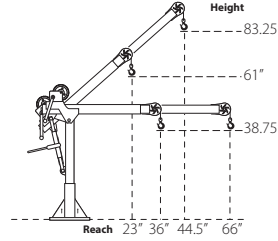
WARNING
CANCER AND REPRODUCTIVE HARM
Some products may contain chemicals known to the state of California to cause cancer, or birth defect or reproductive harm.
www.P65Warning.ca.gov

OZTP1200DAV DIMENSIONS

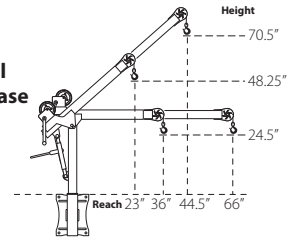
Horizontal and 45° Boom Position



w/ Pedestal Base

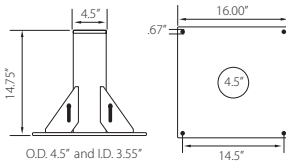


w/ Wall Mount Base

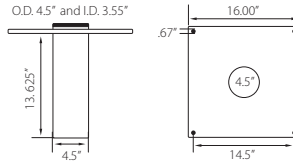


OZTP1200DAV BASES (sold separately) Comes with mounting template.

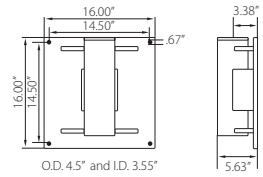
OZPED1-TP



OZSOC1-TP



OZWALL1-TP



OZTP1200DAV LOAD RATINGS – Horizontal Boom Angle

– Based on 3/16 inch wire rope

Load Ratings (lbs.)	1st. Layer	Mid Drum	Full Drum
Boom Position 1 at 36°	800 lbs.	800 lbs.	550 lbs.
Boom Position 2 at 46°	800 lbs.	800 lbs.	550 lbs.
Boom Position 3 at 56°	750 lbs.	750 lbs.	550 lbs.
Boom Position 4 at 66°	650 lbs.	650 lbs.	550 lbs.

OZTP1200DAV LOAD RATINGS – Horizontal Boom Angle

– Based on 1/4 inch wire rope or 3/16 inch Ultrax synthetic rope

Load Ratings (lbs.)	1st. Layer	Mid Drum	Full Drum
Boom Position 1 at 36°	1200 lbs.	875 lbs.	550 lbs.
Boom Position 2 at 46°	900 lbs.	875 lbs.	550 lbs.
Boom Position 3 at 56°	750 lbs.	750 lbs.	550 lbs.
Boom Position 4 at 66°	650 lbs.	650 lbs.	550 lbs.

OZTP1200DAV LOAD RATINGS – 45° Boom Angle

– Based on 3/16 inch wire rope

Load Ratings (lbs.)	1st. Layer	Mid Drum	Full Drum
Boom Position 1 at 23°	800 lbs.	800 lbs.	550 lbs.
Boom Position 2 at 30.25°	800 lbs.	800 lbs.	550 lbs.
Boom Position 3 at 37.25°	800 lbs.	800 lbs.	550 lbs.
Boom Position 4 at 44.5°	800 lbs.	800 lbs.	550 lbs.

OZTP1200DAV LOAD RATINGS – 45° Boom Angle

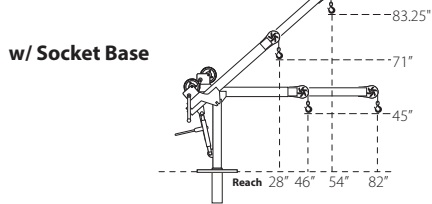
– Based on 1/4 inch wire rope or 3/16 inch Ultrax synthetic rope

Load Ratings (lbs.)	1st. Layer	Mid Drum	Full Drum
Boom Position 1 at 23°	1200 lbs.	875 lbs.	550 lbs.
Boom Position 2 at 30.25°	1200 lbs.	875 lbs.	550 lbs.
Boom Position 3 at 37.25°	1100 lbs.	875 lbs.	550 lbs.
Boom Position 4 at 44.5°	950 lbs.	875 lbs.	550 lbs.

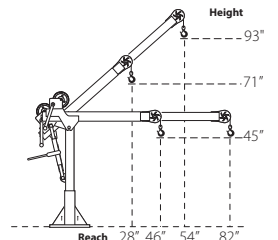
Load ratings shown are based on a manual winch • See page 25 for electric winch load ratings.

OZTP2500DAV DIMENSIONS

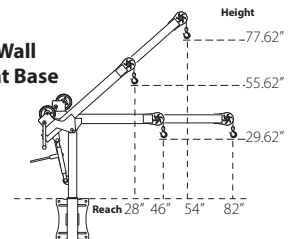
Horizontal and 45° Boom Position



w/ Pedestal Base

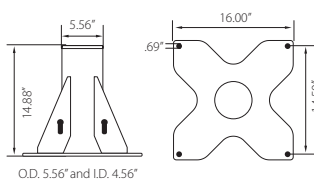


w/ Wall Mount Base

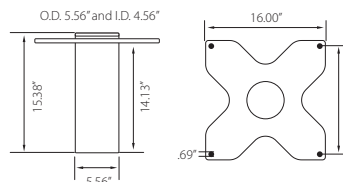


OZTP2500DAV BASES (sold separately) Comes with mounting template.

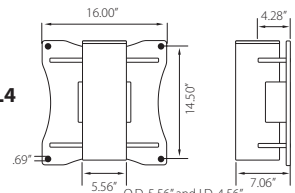
OZPED4



OZSOC4



OZWALL4



OZTP2500DAV LOAD RATINGS – Horizontal Boom Angle

– Based on 1/4 inch Ultrax synthetic rope

Load Ratings (lbs.)	1st. Layer	Mid Drum	Full Drum
Boom Position 1 at 46°	2000 lbs.	2000 lbs.	1550 lbs.
Boom Position 2 at 58°	1900 lbs.	1900 lbs.	1550 lbs.
Boom Position 3 at 70°	1600 lbs.	1600 lbs.	1550 lbs.
Boom Position 4 at 82°	1300 lbs.	1300 lbs.	1300 lbs.

OZTP2500DAV LOAD RATINGS – Horizontal Boom Angle

– Based on 3/8 inch Ultrax synthetic rope

Load Ratings (lbs.)	1st. Layer	Mid Drum	Full Drum
Boom Position 1 at 46°	2500 lbs.	2015 lbs.	1550 lbs.
Boom Position 2 at 58°	1900 lbs.	1900 lbs.	1550 lbs.
Boom Position 3 at 70°	1600 lbs.	1600 lbs.	1550 lbs.
Boom Position 4 at 82°	1300 lbs.	1300 lbs.	1300 lbs.

OZTP2500DAV LOAD RATINGS – 45° Boom Angle

– Based on 1/4 inch Ultrax synthetic rope

Load Ratings (lbs.)	1st. Layer	Mid Drum	Full Drum
Boom Position 1 at 28°	2000 lbs.	2000 lbs.	1550 lbs.
Boom Position 2 at 37°	2000 lbs.	2000 lbs.	1550 lbs.
Boom Position 3 at 45.5°	2000 lbs.	2000 lbs.	1550 lbs.
Boom Position 4 at 54°	2000 lbs.	2000 lbs.	1550 lbs.

OZTP2500DAV LOAD RATINGS – 45° Boom Angle

– Based on 3/8 inch Ultrax synthetic rope

Load Ratings (lbs.)	1st. Layer	Mid Drum	Full Drum
Boom Position 1 at 28°	2500 lbs.	2015 lbs.	1550 lbs.
Boom Position 2 at 37°	2500 lbs.	2015 lbs.	1550 lbs.
Boom Position 3 at 45.5°	2500 lbs.	2015 lbs.	1550 lbs.
Boom Position 4 at 54°	2000 lbs.	2000 lbs.	1550 lbs.

Load ratings shown are based on a manual winch • Load ratings will vary depending on wire or synthetic rope length and diameter. Dimensions and illustrations are for reference only and subject to change without notice.

WIRE/SYNTHETIC ROPE ASSEMBLIES

Steel Wire Rope (For manual winch)

OZGAL.19-80B	3/16" x 80'	Galvanized cable assembly
OZSS.19-80B	3/16" x 80'	Stainless steel cable assembly
OZGAL.25-55B	1/4" x 55'	Galvanized cable assembly
OZSS.25-55B	1/4" x 55'	Stainless steel cable assembly

Above cable assemblies come with swaged ball and swivel hook with latch.

Custom cable length available.

3/16" - 80 ft max. length • 1/4" - 55ft max. length

Steel Wire Rope (For manual and power winch)

OZGAL.19-90	3/16" x 90'	Galvanized cable assembly
OZSS.19-90	3/16" x 90'	Stainless Steel cable assembly
OZGAL.25-45	1/4" x 45'	Galvanized cable assembly
OZSS.25-45	1/4" x 45'	Stainless Steel cable assembly

All cable assemblies come with a swivel hook with latch.

Custom cable length available.

3/16" - 90 ft max. length • 1/4" - 45ft max. length



Synthetic Rope

OZSR.19-15	3/16" x 15'	Ultrax Synthetic Rope
OZSR.19-50	3/16" x 50'	Ultrax Synthetic Rope
OZSR.19-90	3/16" x 90'	Ultrax Synthetic Rope
OZSR.25-50	1/4" x 50'	Ultrax Synthetic Rope
OZSR.25-75	1/4" x 75'	Ultrax Synthetic Rope
OZSR.31-55	5/16" x 55'	Ultrax Synthetic Rope
OZSR.38-45	3/8" x 45'	Ultrax Synthetic Rope

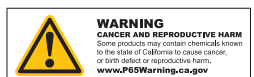
All synthetic rope assemblies come with looped ends and pre-installed swivel hook with latch



HEADACHE BALL

OZHB10

Keeps your wire rope tensioned even when lowering the hook with no load. Compatible with 3/16" and 1/4" wire rope assemblies. Headache balls sold separately from all davit cranes and wire rope assemblies.





DAVIT CRANE COVER

OZDAV-C1

Protect your davit crane from the elements with this waterproof cover. Compatible with all OZ Lifting Products davit cranes 1200 lbs. capacity or less excluding the XR series.

COMING SOON



*Optional floor anchoring system

PORTABLE DAVIT BASE

For all OZ Lifting davit cranes up to 1200 lbs capacity

- Optional floor anchoring system allows the davit to rotate while under load (when base is not anchored the davit must remain in a forward position when lifting)
- Oversized casters make rolling the base and moving loads easy
- Compatible with all OZ lifting davit cranes up to 1200 lbs capacity
- Durable steel construction with powder coat finish
- Davit crane sold separately
- Patent pending



CARBON STEEL & STAINLESS STEEL BRAKE WINCHES

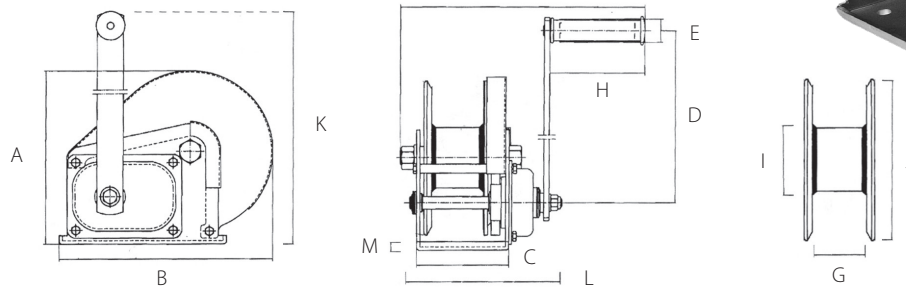
Features

- Compact design
- Ergonomic rubber handle
- Multiple frame mounting positions
- Solid machined gear
- Dual cable anchor point
- Drill drive adapter standard on stainless steel. Optional on carbon steel
- Automatic weatherproof weston style load brake
- High gear ratio
- Test certificate & serial number
- For lifting or pulling/tensioning
- Left hand version of stainless steel winch available (OZ1000BWSS-LH)

Standard - CE

Cable/Drum Capacity	1st layer (ft)	Mid drum (ft)	Full drum (ft)
OZ1000BW – OZ1000BWSS using 1/8" wire rope	7	74	140
OZ1000BW – OZ1000BWSS using 3/16" wire rope	5	34	75
OZ1500BW – OZ1500BWSS using 3/16" wire rope	7	66	140
OZ1500BW – OZ1500BWSS using 1/4" wire rope	5	27	89
OZ2000BW – OZ2000BWSS using 1/4" wire rope	8	36	85
OZ2000BW – OZ2000BWSS using 5/16" wire rope	7	22	52

Load Capacity (lbs - based on the amount of wire rope)			
OZ1000BW – OZ1000BWSS	1000	750	500
OZ1500BW – OZ1500BWSS	1500	1250	750
OZ2000BW – OZ2000BWSS	2000	1500	1000



	OZ1000BW	OZ1000BWSS	OZ1500BW – OZ1500BWSS	OZ2000BW – OZ2000BWSS	
Capacity (lbs)	1000	1000	1500	2000	
Gear Ratio	4.2:1	4.2:1	5:1	10:1	
Dimensions (in)	A	6.22	7.73	8.35	
	B	7.20	7.20	9.36	11.10
	C	3.46	3.46	4.21	5.00
	D	8.26	8.26	12.68	12.99
	E	1.06	1.06	1.06	1.06
	F	10.43	10.43	10.63	11.81
	G	1.98	1.98	2.30	2.52
	H	4.29	4.29	4.29	4.29
	I	1.59	1.98	2.38	3.00
	J	5.33	5.33	7.00	7.09
	K	10.20	10.20	15.31	15.35
L	5.98	5.98	6.89	7.87	
M	0.12	0.12	0.14	0.16	
Net Weight (lbs)	8	8	17	22	

Dimensions and illustrations are for reference only and subject to change without notice.



AC & DC ELECTRIC WINCHES

Features

- Two-braking system mechanical and dynamic
- Fully-enclosed gearing
- Machine cut and hardened gears
- Lightweight
- Emergency handle
- Easily bolts on to OZ davit cranes

Capacity

OZACW (115V AC): 1200 lbs.
OZDCW (12V DC): 1200 lbs.

Net Weight

OZACW – 22 lbs.
OZDCW – 24 lbs.

Maximum Drum Capacity

3/16" diameter wire rope=90' lift
1/4" diameter wire rope=45' lift

Pendant/ Power Cord Length

115V AC: 10' Pendant
10' Power Cord
12V DC: 10' Pendant
25' (+) Power Lead

Motor Full Load AMPS

OZACW – 1.0 HP OZACW – 10A
OZDCW – 0.6 HP OZDCW – 70A



OZACW

**3 minutes of continuous use
15 minute cool down**

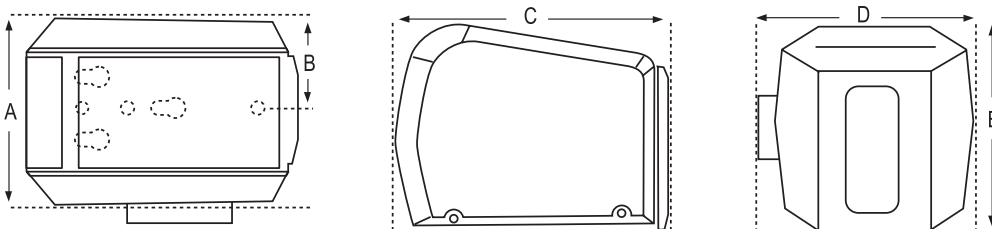


OZDCW

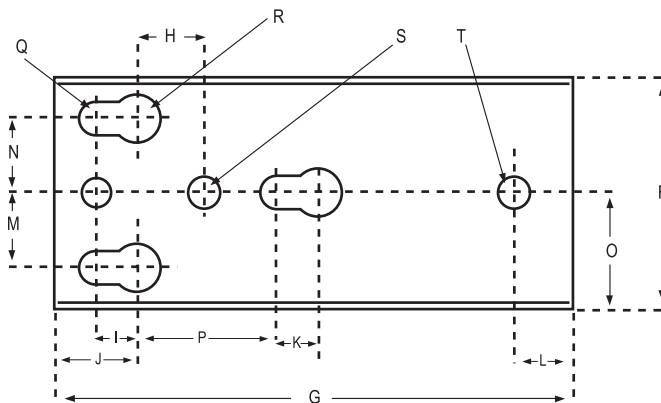


Load Capacity Based on the Amount of Cable	3/16" Cable	1/4" Cable
1st Layer (lbs)	800	1200
Mid. Drum (lbs)	800	1120
Full (lbs)	800	850

Winch Speed Based on Load & Cable on the Drum	First Layer	Full
AC, No Load (ft/min)	23	35
AC, Full Load (ft/min)	12	16
DC, No Load (ft/min)	21	33
DC, Full Load (ft/min)	5.5	8



Dimensions – All Models (in)	
A	7.43
B	3.57
C	10.81
D	8.18
E	8.12



Mounting Plate

Mounting Plate Dimensions – All Models (in)		
F	3.62	K .62
G	8.68	L 1
H	1.18	M 1.25
I	.625	N 1.25
J	1.37	O 1.81
		P 3
		Q .53
		R .78
		S .42
		T .50

Dimensions and illustrations are for reference only and subject to change without notice.

