

CARBON STEEL & STAINLESS STEEL BRAKE WINCHES

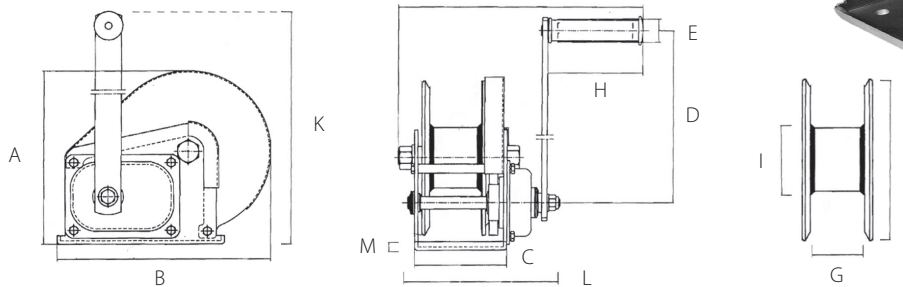
Features

- Compact design
- Ergonomic rubber handle
- Multiple frame mounting positions
- Solid machined gear
- Dual cable anchor point
- Drill drive adapter standard on stainless steel. Optional on carbon steel
- Automatic weatherproof weston style load brake
- High gear ratio
- Test certificate & serial number
- For lifting or pulling/tensioning
- Left hand version of stainless steel winch available (OZ1000BWSS-LH)

Standard - CE

| Cable/Drum Capacity | 1st layer (ft) | Mid drum (ft) | Full drum (ft) |
|---|----------------|---------------|----------------|
| OZ1000BW – OZ1000BWSS using 1/8" wire rope | 7 | 74 | 140 |
| OZ1000BW – OZ1000BWSS using 3/16" wire rope | 5 | 34 | 75 |
| OZ1500BW – OZ1500BWSS using 3/16" wire rope | 7 | 66 | 140 |
| OZ1500BW – OZ1500BWSS using 1/4" wire rope | 5 | 27 | 89 |
| OZ2000BW – OZ2000BWSS using 1/4" wire rope | 8 | 36 | 85 |
| OZ2000BW – OZ2000BWSS using 5/16" wire rope | 7 | 22 | 52 |

| Load Capacity (lbs - based on the amount of wire rope) | | | |
|--|------|------|------|
| OZ1000BW – OZ1000BWSS | 1000 | 750 | 500 |
| OZ1500BW – OZ1500BWSS | 1500 | 1250 | 750 |
| OZ2000BW – OZ2000BWSS | 2000 | 1500 | 1000 |



| | OZ1000BW | OZ1000BWSS | OZ1500BW – OZ1500BWSS | OZ2000BW – OZ2000BWSS | |
|------------------|----------|------------|-----------------------|-----------------------|-------|
| Capacity (lbs) | 1000 | 1000 | 1500 | 2000 | |
| Gear Ratio | 4.2:1 | 4.2:1 | 5:1 | 10:1 | |
| Dimensions (in) | A | 6.22 | 7.73 | 8.35 | |
| | B | 7.20 | 7.20 | 9.36 | 11.10 |
| | C | 3.46 | 3.46 | 4.21 | 5.00 |
| | D | 8.26 | 8.26 | 12.68 | 12.99 |
| | E | 1.06 | 1.06 | 1.06 | 1.06 |
| | F | 10.43 | 10.43 | 10.63 | 11.81 |
| | G | 1.98 | 1.98 | 2.30 | 2.52 |
| | H | 4.29 | 4.29 | 4.29 | 4.29 |
| | I | 1.59 | 1.98 | 2.38 | 3.00 |
| | J | 5.33 | 5.33 | 7.00 | 7.09 |
| | K | 10.20 | 10.20 | 15.31 | 15.35 |
| L | 5.98 | 5.98 | 6.89 | 7.87 | |
| M | 0.12 | 0.12 | 0.14 | 0.16 | |
| Net Weight (lbs) | 8 | 8 | 17 | 22 | |



Dimensions and illustrations are for reference only and subject to change without notice.



AC & DC ELECTRIC WINCHES

Features

- Two-braking system mechanical and dynamic
- Fully-enclosed gearing
- Machine cut and hardened gears
- Lightweight
- Emergency handle
- Easily bolts on to OZ davit cranes

Capacity

OZACW (115V AC): 1200 lbs.
OZDCW (12V DC): 1200 lbs.

Net Weight

OZACW – 22 lbs.
OZDCW – 24 lbs.

Maximum Drum Capacity

3/16" diameter wire rope=90' lift
1/4" diameter wire rope=45' lift

Pendant/ Power Cord Length

115V AC: 10' Pendant
10' Power Cord
12V DC: 10' Pendant
25' (+) Power Lead

Motor Full Load AMPS

OZACW – 1.0 HP OZACW – 10A
OZDCW – 0.6 HP OZDCW – 70A



OZACW

**3 minutes of continuous use
15 minute cool down**

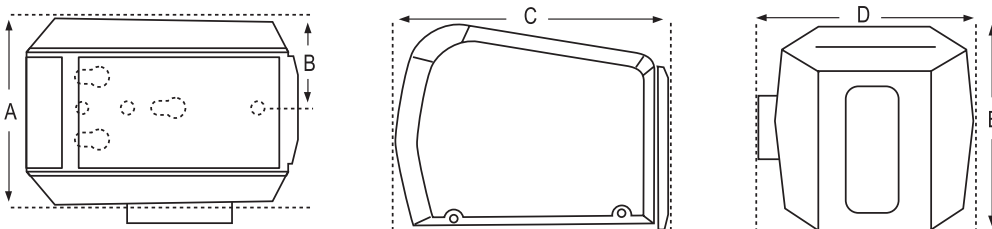


OZDCW

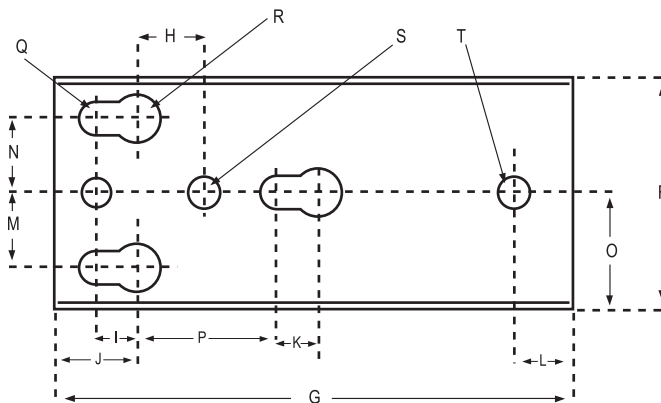


| Load Capacity Based on the Amount of Cable | 3/16" Cable | 1/4" Cable |
|--|-------------|------------|
| 1st Layer (lbs) | 800 | 1200 |
| Mid. Drum (lbs) | 800 | 1120 |
| Full (lbs) | 800 | 850 |

| Winch Speed Based on Load & Cable on the Drum | First Layer | Full |
|---|-------------|------|
| AC, No Load (ft/min) | 23 | 35 |
| AC, Full Load (ft/min) | 12 | 16 |
| DC, No Load (ft/min) | 21 | 33 |
| DC, Full Load (ft/min) | 5.5 | 8 |



| Dimensions – All Models (in) | |
|------------------------------|-------|
| A | 7.43 |
| B | 3.57 |
| C | 10.81 |
| D | 8.18 |
| E | 8.12 |



Mounting Plate

| Mounting Plate Dimensions – All Models (in) | | |
|---|------|--------|
| F | 3.62 | K .62 |
| G | 8.68 | L 1 |
| H | 1.18 | M 1.25 |
| I | .625 | N 1.25 |
| J | 1.37 | O 1.81 |
| | | P 3 |
| | | Q .53 |
| | | R .78 |
| | | S .42 |
| | | T .50 |

Dimensions and illustrations are for reference only and subject to change without notice.

